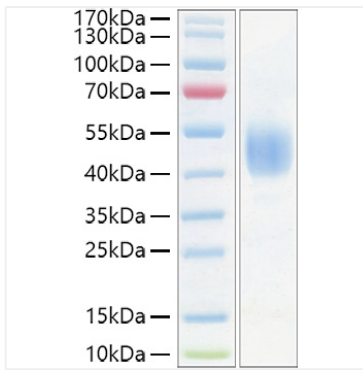
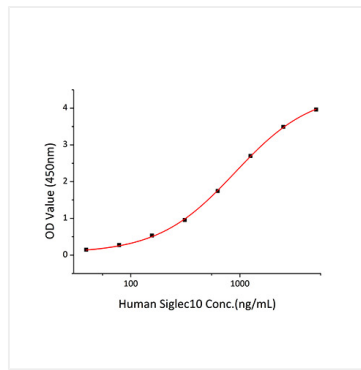


Validation Data



Recombinant Mouse CD24 Protein was determined by SDS-PAGE under reducing conditions with Coomassie Blue.



Immobilized Mouse CD24 (Catalog: RP01437) at 2 $\mu\text{g}/\text{mL}$ (100 $\mu\text{L}/\text{well}$) can bind Human Siglec10 with a linear range of 40-900ng/mL.