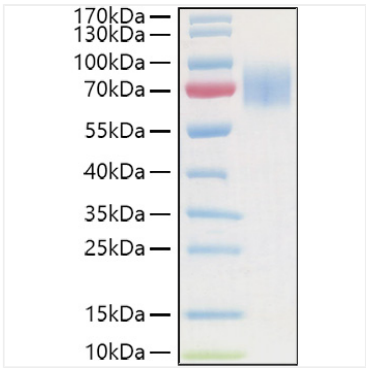
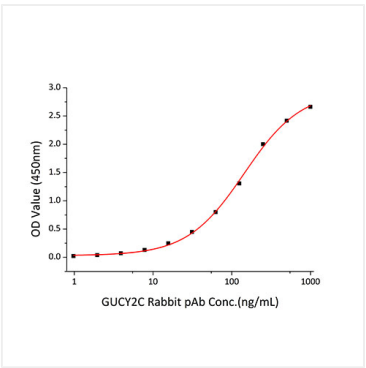


*

Validation Data



Recombinant Human Guanylyl cyclase C/GUCY2C Protein was determined by SDS-PAGE under reducing conditions with Coomassie Blue.



Immobilized recombinant Human GUCY2C at 1μg/mL (100 μL/well) can bind GUCY2C Rabbit pAb with a linear range of 1-144ng/mL.