

**Catalog No.: RP01409** **Recombinant**

Species	Gene ID	Swiss Prot
Human	5284	P01833

## C-His

## PIGR

Polymeric immunoglobulin receptor, also known as PIGR, is a member of the immunoglobulin superfamily and a Fc receptor. The ectodomain of this receptor consists of five units with homology to the variable units of immunoglobulins and a transmembrane region, which also has some homology to certain immunoglobulin variable regions. PIGR is expressed on several glandular epithelia including those of liver and breast. The deduced amino-acid sequence has a length of 764 residues and shows an overall similarity of 56% and 64% with the rabbit and rat counterpart. PIGR mediates transcellular transport of polymeric immunoglobulin molecules, and thus facilitates the secretion of IgA and IgM. During this process, a cleavage occurs that separates the extracellular (known as the secretory component) from the transmembrane segment of PIGR.

<b>Source</b>	<b>Purification</b>
HEK293 cells	≥ 95 % as determined by SDS-PAGE

## 68.68 kDa                      90-100 kDa

< 0.1 EU/μg of the protein by LAL method.

Lyophilized from a 0.22  $\mu\text{m}$  filtered solution of PBS, pH 7.4.

Centrifuge the vial before opening. Reconstitute to a concentration of 0.1-0.5 mg/mL in sterile distilled water. Avoid vortex or vigorously pipetting the protein. For long term storage, it is recommended to add a carrier protein or stabilizer (e.g. 0.1% BSA, 5% HSA, 10% FBS or 5% Trehalose), and aliquot the reconstituted protein solution to minimize free-thaw cycles.

Recombinant Human PlgR Protein is produced by HEK293 cells expression system. The target protein is expressed with sequence (Lys19-Arg638) of human PIGR (Accession #NP\_002635.2) fused with a 6×His tag at the C-terminus.

The product is shipped at ambient temperature. Upon receipt, store it immediately at the temperature recommended below.

**Storage**  
Store at -20°C. Store the lyophilized protein at -20°C to -80 °C up to 1 year from the date of receipt.

After reconstitution, the protein solution is stable at -20°C for 3 months, at 2-8°C for up to 1 week.

Avoid repeated freeze/thaw cycles.

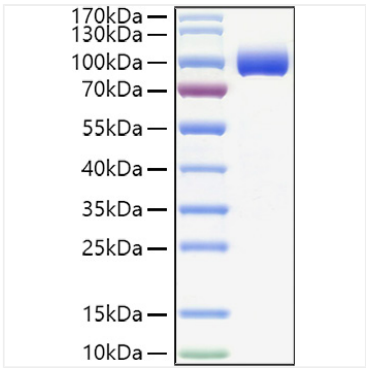
For your safety and health, please wear a lab coat and disposable gloves for handling.

 | 400-999-6126

✉ | [cn.market@abclonal.com.cn](mailto:cn.market@abclonal.com.cn)

 | [www.abclonal.com.cn](http://www.abclonal.com.cn)

Validation Data



Recombinant Human PlgR Protein was determined by SDS-PAGE under reducing conditions with Coomassie Blue.