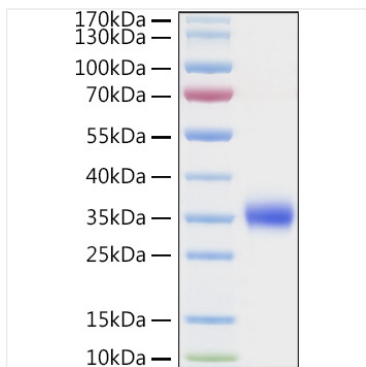
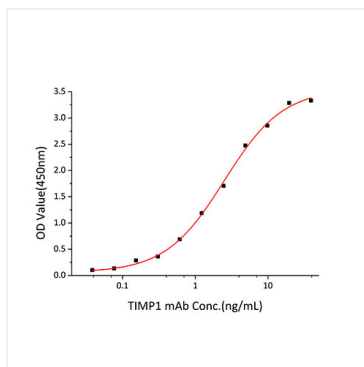




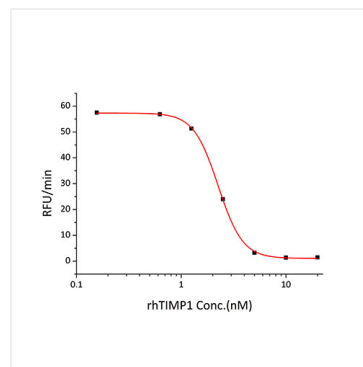
## Validation Data



Recombinant Human TIMP-1 Protein was determined by SDS-PAGE under reducing conditions with Coomassie Blue.



Immobilized recombinant Human TIMP1 Protein at  $1\mu\text{g/mL}$  ( $100\mu\text{L/well}$ ) can bind TIMP1 Rabbit mAb with a linear range of  $0.038\text{-}2.5\text{ng/mL}$ .



Recombinant Human TIMP-1 inhibit human MMP-2 cleavage of a fluorogenic peptide substrate Mca-PLGL-Dpa-AR-NH<sub>2</sub>. The IC<sub>50</sub> value is approximately  $2.2\text{ nM}$ .