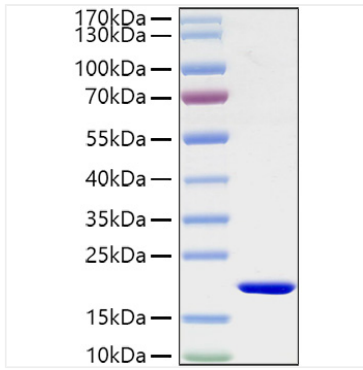
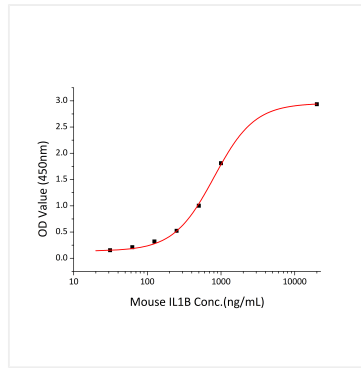




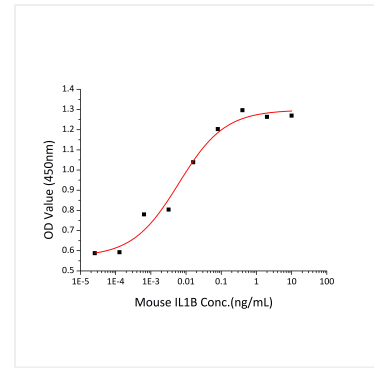
## Validation Data



Recombinant Mouse IL-1 beta Protein was determined by SDS-PAGE under reducing conditions with Coomassie Blue.



Immobilized Mouse IL1B at 10  $\mu\text{g/mL}$  (100  $\mu\text{L/well}$ ) can bind Human IL1R2 with a linear range of 0.03125-0.8036  $\mu\text{g/mL}$ .



Recombinant Mouse IL-1B promotes the proliferation of D10.G4.1 mouse helper T cells. The  $\text{ED}_{50}$  for this effect is 3.10-12.40  $\mu\text{g/mL}$ , corresponding to a specific activity of  $8.06 \times 10^7 \sim 3.23 \times 10^8$  units/mg..