

# Recombinant Human TET2 Protein

Catalog No.: RP01335LQ **Recombinant**

## Sequence Information

| Species | Gene ID | Swiss Prot |
|---------|---------|------------|
| Human   | 54790   | Q6N021-1   |

### Tags

Please contact us for more information.

### Synonyms

MDS; KIAA1546;TET2;KIAA1546

## Product Information

| Source       | Purification                      |
|--------------|-----------------------------------|
| HEK293 cells | ≥ 90 % as determined by SDS-PAGE. |

| Calculated MW | Observed MW |
|---------------|-------------|
| 53.14 kDa     | 60-65 kDa   |

### Endotoxin

Please contact us for more information.

### Formulation

Supplied as a 0.22 μm filtered solution of 50mM HEPES,300mM NaCl,1mM TCEP,10% Glycerol,pH 8.0.

### Reconstitution

## Background

## Basic Information

### Description

Recombinant Human TET2 Protein is produced by HEK293 cells expression system.

### Bio-Activity

Measured by its binding ability in a functional ELISA. Immobilized Human TET2 Protein at 1 μg/mL (100 μL/well) can bind TET2 Rabbit pAb with a linear range of 0.976-232.5 ng/mL.

### Storage

Store at -70°C. This product is stable at ≤ -70°C for up to 1 year from the date of receipt. For optimal storage, aliquot into smaller quantities after centrifugation and store at recommended temperature. Avoid repeated freeze-thaw cycles. Avoid repeated freeze/thaw cycles.

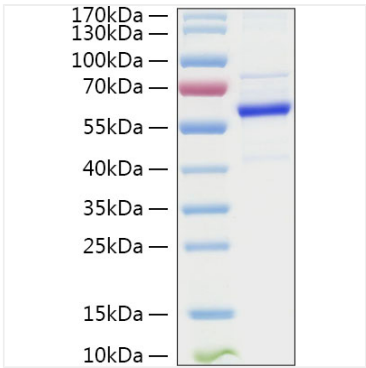
## Contact

 | 400-999-6126

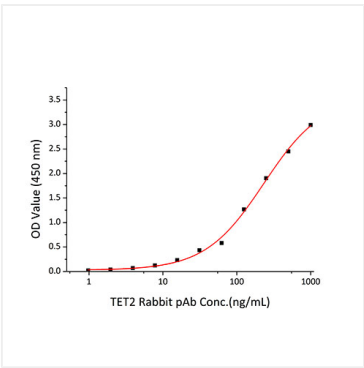
 | [cn.market@abclonal.com.cn](mailto:cn.market@abclonal.com.cn)

 | [www.abclonal.com.cn](http://www.abclonal.com.cn)

# Validation Data



Recombinant Human TET2 Protein was determined by SDS-PAGE under reducing conditions with Coomassie Blue.



Immobilized Recombinant Human TET2 Protein at 1μg/mL (100 μL/well) can bind TET2 Rabbit pAb with a linear range of 0.976-232.5ng/mL.