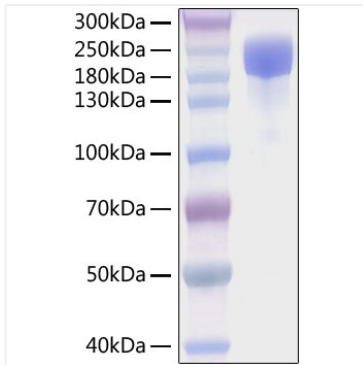


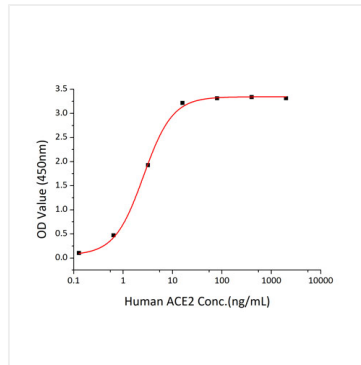


## Validation Data

---



Recombinant SARS-CoV-2 Spike S1+S2 ECD(S-ECD)(D614G) Protein was determined by SDS-PAGE under reducing conditions with Coomassie Blue.



Immobilized recombinant SARS-CoV-2 Spike S1+S2 ECD at 2 $\mu$ g/mL (100  $\mu$ L/well) can bind recombinant Human ACE2 with a linear range of 0.15-2.58 ng/mL.