

Recombinant Mouse Siglec-15/CD33L3 Protein

Catalog No.: RP01290 **Recombinant**

Sequence Information

Species	Gene ID	Swiss Prot
Mouse	620235	A7E1W8

Tags

C-hFc

Synonyms

sialic acid-binding Ig-like lectin 15;CD33 antigen-like 3;SIGLEC15;Siglec15;SIGLEC15;sialic acid-binding Ig-like lectin 15;CD33 antigen-like 3;SIGLEC15;Siglec15;SIGLEC15

Product Information

Source	Purification
HEK293 cells	≥ 90 % as determined by SDS-PAGE.

Calculated MW	Observed MW
51.59 kDa	55-70 kDa

Endotoxin

< 0.1 EU/μg of the protein by LAL method.


Formulation

Lyophilized from a 0.22 μm filtered solution of PBS, pH 7.4.

Reconstitution

Centrifuge the vial before opening. Reconstitute to a concentration of 0.1-0.5 mg/mL in sterile distilled water. Avoid vortex or vigorously pipetting the protein. For long term storage, it is recommended to add a carrier protein or stabilizer (e.g. 0.1% BSA, 5% HSA, 10% FBS or 5% Trehalose), and aliquot the reconstituted protein solution to minimize free-thaw cycles.

Contact

 | 400-999-6126

 | cn.market@abclonal.com.cn

Background

Basic Information

Description

Recombinant Mouse Siglec-15/CD33L3 Protein is produced by HEK293 cells expression system. The target protein is expressed with sequence (Arg24-Thr262) of mouse Siglec-15/CD33L3 (Accession #NP_001094508.1) fused with a Fc tag at the C-terminus.

Bio-Activity

Shipping

The product is shipped at ambient temperature. Upon receipt, store it immediately at the temperature recommended below.

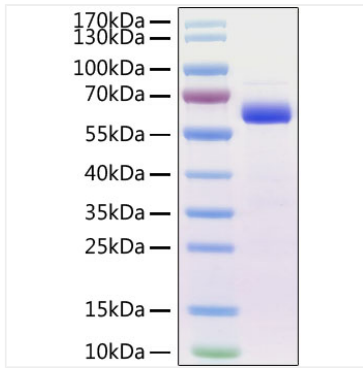
Storage

Store at -20°C. Store the lyophilized protein at -20°C to -80 °C up to 1 year from the date of receipt. After reconstitution, the protein solution is stable at -20°C for 3 months, at 2-8°C for up to 1 week. Avoid repeated freeze/thaw cycles.

Operational Notes

For your safety and health, please wear a lab coat and disposable gloves for handling.

Validation Data



Recombinant Mouse Siglec-15/CD33L3
Protein was determined by SDS-PAGE under
reducing conditions with Coomassie Blue.