

# Recombinant SARS-CoV-2 Spike S1 Protein

Catalog No.: RP01280 **Recombinant**

## Sequence Information

Species	Gene ID	Swiss Prot
SARS-CoV-2	43740568	P0DTC2

### Tags

C-mFc

### Synonyms

Envelope;SARS-CoV-2 Spike RBD (N501Y);Spike;Spike ECD;Spike RBD;Spike S1;Spike S2;Spike S2 ECD;S1-RBD protein;NCP-CoV RBD Protein;novel coronavirus RBD Protein;2019-nCoV RBD Protein;S glycoprotein Subunit1 RBD Protein

## Product Information

Source	Purification
HEK293 cells	> 85% by SDS-PAGE.

### Endotoxin

< 0.1 EU/μg of the protein by LAL method.

### Formulation

Lyophilized from a 0.22 μm filtered solution of PBS, pH 7.4 or Supplied as a 0.22 μm filtered solution in PBS, pH 7.4. Contact us for customized product form or formulation.

### Reconstitution

Centrifuge the vial before opening. Reconstitute to a concentration of 0.1-0.5 mg/mL in sterile distilled water. Avoid vortex or vigorously pipetting the protein. For long term storage, it is recommended to add a carrier protein or stabilizer (e.g. 0.1% BSA, 5% HSA, 10% FBS or 5% Trehalose), and aliquot the reconstituted protein solution to minimize free-thaw cycles.

## Background

## Basic Information

### Description

Recombinant SARS-CoV-2 Spike S1 Protein is produced by HEK293 cells expression system. The target protein is expressed with sequence (Val16-Arg685) of sars-cov-2 Spike S1 (Accession #YP\_009724390.1) fused with a mFc tag at the C-terminus.

### Bio-Activity

Measured by its binding ability in a functional ELISA. Immobilized Recombinant Human ACE2-His Protein at 2 μg/mL (100 μL/well) can bind Recombinant SARS-CoV-2 Spike S1-mFc Protein, the EC<sub>50</sub> of Recombinant SARS-CoV-2 Spike S1-mFc Protein is 79.21 ng/mL.

### Storage

Store the lyophilized protein at -20°C to -80°C for long term.

After reconstitution, the protein solution is stable at -20°C for 3 months, at 2-8°C for up to 1 week. or This liquid product is stable at ≤ -70°C for up to 1 year from the date of receipt.

For optimal storage, aliquot into smaller quantities after centrifugation and store at recommended temperature.

Avoid repeated freeze/thaw cycles.

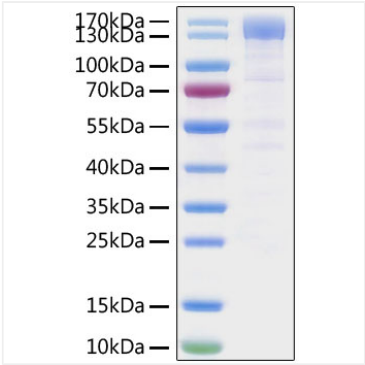
## Contact

☎ | 400-999-6126

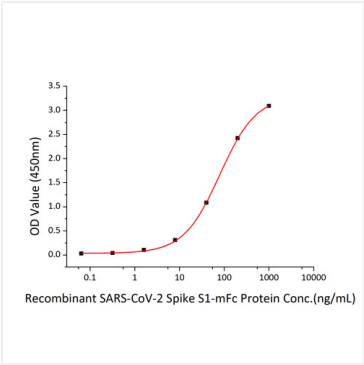
✉ | [cn.market@abclonal.com.cn](mailto:cn.market@abclonal.com.cn)

🌐 | [www.abclonal.com.cn](http://www.abclonal.com.cn)

Validation Data



Recombinant SARS-CoV-2 Spike S1 Protein was determined by SDS-PAGE with Coomassie Blue, showing a band at 130-160 kDa.



Immobilized Recombinant Human ACE2-His Protein at 2μg/mL (100 μL/well) can bind Recombinant SARS-CoV-2 Spike S1-mFc Protein. The EC<sub>50</sub> of Recombinant SARS-CoV-2 Spike S1-mFc Protein is 79.21 ng/mL.