

Recombinant Human ACE-2 Protein

Catalog No.: RP01275 **Recombinant**

Sequence Information

Species	Gene ID	Swiss Prot
Human	59272	Q9BYF1

Tags

C-hFc

Synonyms

ACE2; ACEH; angiotensin-converting enzyme 2;ACEH

Product Information

Source	Purification
HEK293 cells	≥ 95 % as determined by SDS-PAGE.

Calculated MW	Observed MW
109.56 kDa	140-150 kDa

Endotoxin

< 0.1 EU/μg of the protein by LAL method.

Formulation

Lyophilized from a 0.22 μm filtered solution of PBS, pH 7.4. or Supplied as a 0.22 μm filtered solution in PBS, pH 7.4. Contact us for customized product form or formulation.

Reconstitution

Centrifuge the vial before opening. Reconstitute to a concentration of 0.1-0.5 mg/mL in sterile distilled water. Avoid vortex or vigorously pipetting the protein. For long term storage, it is recommended to add a carrier protein or stabilizer (e.g. 0.1% BSA, 5% HSA, 10% FBS or 5% Trehalose), and aliquot the reconstituted protein solution to minimize free-thaw cycles.

Contact

☎ | 400-999-6126

✉ | cn.market@abclonal.com.cn

Background

Basic Information

Description

Recombinant Human ACE2 Protein is produced by HEK293 cells expression system. The target protein is expressed with sequence (Gln18-Ser740) of human ACE2 (Accession #Q9BYF1) fused with a Fc tag at the C-terminus.

Bio-Activity

Measured by its binding ability in a functional ELISA. Immobilized SARS-CoV-2 Spike RBD at 1 μg/mL (100 μL/well) can bind Human ACE2 with a linear range of 0.01-2.4 ng/mL.

Shipping

The product is shipped at ambient temperature. Upon receipt, store it immediately at the temperature recommended below.

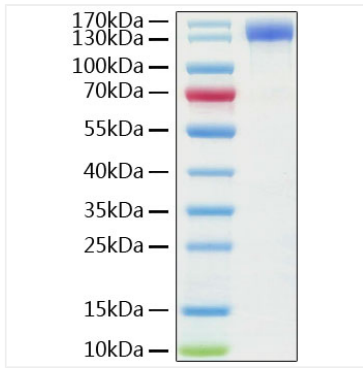
Storage

Store at -20°C. Store the lyophilized protein at -20°C to -80 °C up to 1 year from the date of receipt. After reconstitution, the protein solution is stable at -20°C for 3 months, at 2-8°C for up to 1 week. Avoid repeated freeze/thaw cycles.

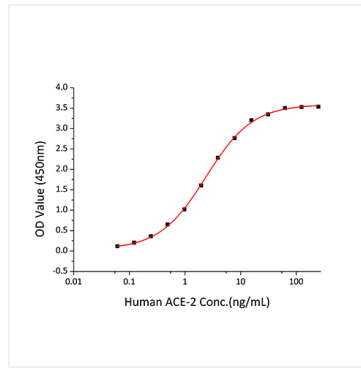
Operational Notes

For your safety and health, please wear a lab coat and disposable gloves for handling.

Validation Data



Recombinant Human ACE-2 Protein was determined by SDS-PAGE under reducing conditions with Coomassie Blue.



Immobilized SARS-CoV-2 Spike RBD at 1 $\mu\text{g/mL}$ (100 μL /well) can bind Human ACE2 with a linear range of 0.01-2.4 ng/mL.