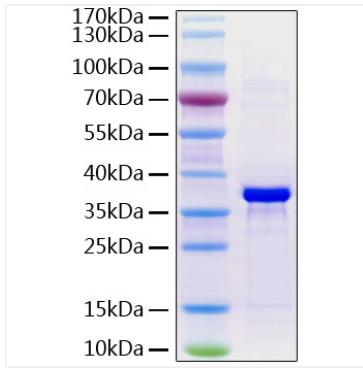
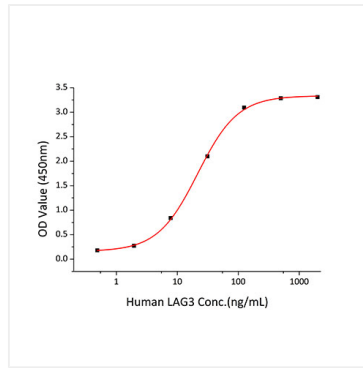


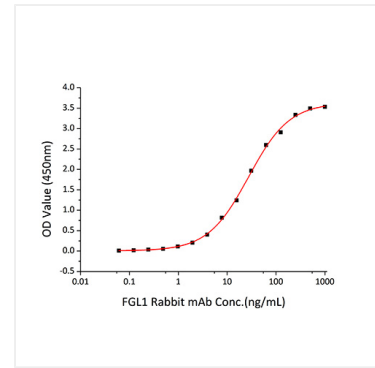
Validation Data



Recombinant Human Fibrinogen like 1/FGL1 Protein was determined by SDS-PAGE under reducing conditions with Coomassie Blue.



Immobilized recombinant Human FGL1 at 5 μ g/mL (100 μ L/well) can bind recombinant Human LAG3 with a linear range of 0.5-21.6ng/mL.



Immobilized Recombinant Human FGL1 at 1 μ g/mL (100 μ L/well) can bind FGL1 Rabbit mAb with a linear range of 1-27.5 ng/mL.