

Recombinant Human ACE-2 Protein

Catalog No.: RP01266 **Recombinant** **2 Publications**

Sequence Information

Species	Gene ID	Swiss Prot
Human	59272	Q9BYF1

Tags

C-His&Avi

Synonyms

ACE2; ACEH; angiotensin-converting enzyme 2;ACEH

Product Information

Source	Purification
HEK293 cells	> 95% by SDS-PAGE.

Endotoxin

< 1.0 EU/μg of the protein by LAL method.

Formulation

Lyophilized from a 0.22 μm filtered solution of PBS, pH 7.4. or Supplied as a 0.22 μm filtered solution in PBS, pH 7.4. Contact us for customized product form or formulation.

Reconstitution

Centrifuge the tube before opening. Reconstitute to a concentration of 0.1-0.5 mg/mL in sterile distilled water. Avoid vortex or vigorously pipetting the protein. For long term storage, it is recommended to add a carrier protein or stabilizer (e.g. 0.1% BSA, 5% HSA, 10% FBS or 5% Trehalose), and aliquot the reconstituted protein solution to minimize free-thaw cycles.

Contact

☎ | 400-999-6126

✉ | cn.market@abclonal.com.cn

🌐 | www.abclonal.com.cn

Background

Basic Information

Description

Active Recombinant Human ACE2 Protein is produced by HEK293 cells expression system. The target protein is expressed with sequence (Gln18-Ser740) of human ACE2 (Accession #Q9BYF1) fused with a 6×His-Avi tag at the C-terminus.

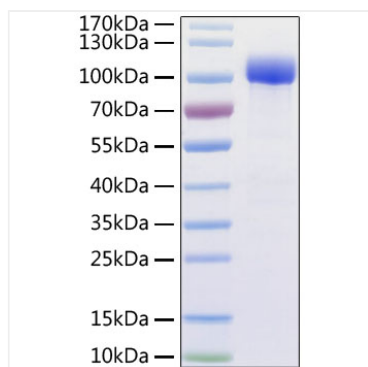
Bio-Activity

Measured by its binding ability in a functional ELISA. Immobilized Human ACE2 at 2 μg/mL (100μL/well) can bind SARS-CoV-2 Spike RBD with a linear range of 0.03-4.9 ng/mL.

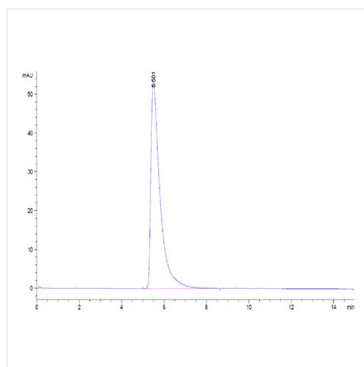
Storage

Store the lyophilized protein at -20°C to -80 °C for long term. After reconstitution, the protein solution is stable at -20 °C for 3 months, at 2-8 °C for up to 1 week. or This product is stable at ≤ -70°C for up to 6 months from the date of receipt. For optimal storage, aliquot into smaller quantities after centrifugation and store at recommended temperature. Avoid repeated freeze/thaw cycles.

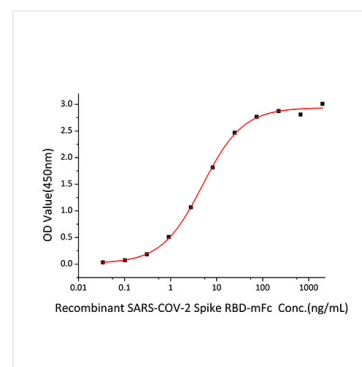
Validation Data



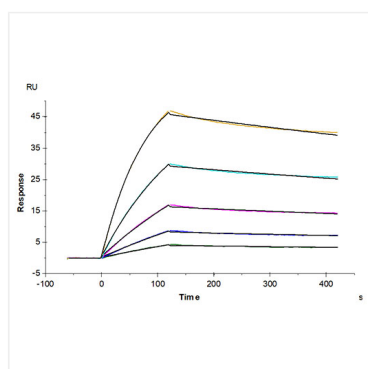
Recombinant Human ACE-2 Protein was determined by SDS-PAGE with Coomassie Blue, showing a band at 95-110 kDa.



The purity of Human ACE2 is greater than 95% as determined by SEC-HPLC



Immobilized Human ACE2 at 2 μ g/mL (100 μ L/well) can bind SARS-CoV-2 Spike RBD with a linear range of 0.03-4.9 ng/mL.



SARS-CoV-2 Spike S1, hFc Tag captured on CM5 Chip via Protein A can bind Human ACE2, His Tag with an affinity constant of 3.80 nM as determined in SPR assay (Biacore T200).