

Recombinant SARS-CoV-2 Spike S1+S2 ECD(S-ECD) Protein

Catalog No.: RP01260MT **Recombinant** **2 Publications**

Sequence Information

Species **Gene ID** **Swiss Prot**
SARS-CoV-2 43740568

Tags

C-His&Avi

Synonyms

Envelope;SARS-CoV-2 Spike RBD (N501Y);Spike;Spike ECD;Spike RBD;Spike S1;Spike S2;Spike S2 ECD;S1-RBD protein;NCP-CoV RBD Protein;novel coronavirus RBD Protein;2019-nCoV RBD Protein;S glycoprotein Subunit1 RBD Protein

Product Information

Source **Purification**
HEK293 cells > 97% by SDS-PAGE.

Endotoxin

< 1.0 EU/μg of the protein by LAL method.

Formulation

Lyophilized from a 0.22 μm filtered solution of PBS, pH 7.4 or Supplied as a 0.22 μm filtered solution in PBS, pH 7.4. Contact us for customized product form or formulation.

Reconstitution

Centrifuge the tube before opening. Reconstitute to a concentration of 0.1-0.5 mg/mL in sterile distilled water. Avoid vortex or vigorously pipetting the protein. For long term storage, it is recommended to add a carrier protein or stabilizer (e.g. 0.1% BSA, 5% HSA, 10% FBS or 5% Trehalose), and aliquot the reconstituted protein solution to minimize freeze-thaw cycles.

Background

Basic Information

Description

Recombinant SARS-CoV-2(2019-nCoV) S1+S2 ECD[S-ECD] Protein is produced by HEK293 cells expression system. The target protein is expressed with sequence Val16-Glu1188 of SARS-COV-2(2019-nCoV) S1+S2 ECD[S-ECD] (Accession #QHD43416.1) fused with a 6×His tag at the C-terminus.

Bio-Activity

Measured by its binding ability in a functional ELISA. Immobilized Recombinant SARS-CoV-2 Spike S1+S2 ECD at 2 μg/mL (100 μL/well) can bind Recombinant Human ACE2 with a linear range of 0.15-3.03 ng/mL.

Storage

Store the lyophilized protein at -20°C to -80 °C for long term.
After reconstitution, the protein solution is stable at -20 °C for 3 months, at 2-8 °C for up to 1 week.
or This product is stable at ≤ -70°C for up to 1 year from the date of receipt.
For optimal storage, aliquot into smaller quantities after centrifugation and store at recommended temperature.
Avoid repeated freeze/thaw cycles.

Contact

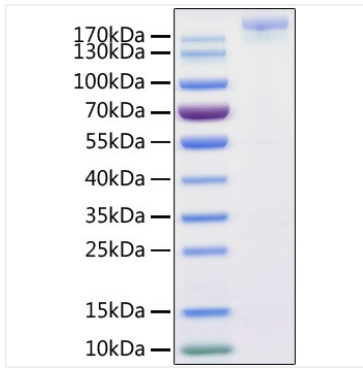
☎ | 400-999-6126

✉ | cn.market@abclonal.com.cn

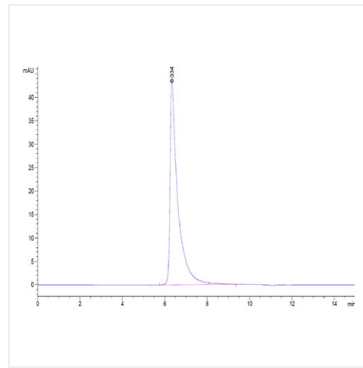


www.abclonal.com.cn

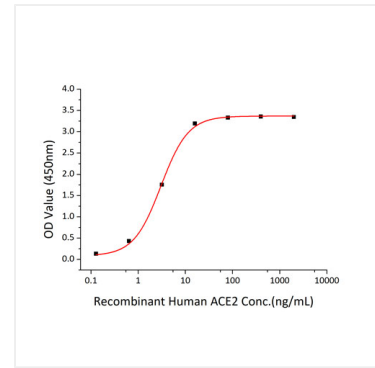
Validation Data



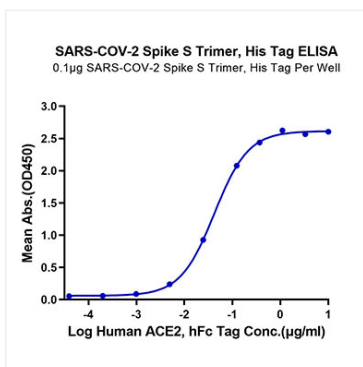
Recombinant SARS-COV-2 S1+S2 ECD (S-ECD) Protein with His tag was determined by SDS-PAGE with Coomassie Blue, showing a band at 170-220 kDa.



The purity of SARS-COV-2 Spike S Trimer is greater than 95% as determined by SEC-HPLC.



Immobilized Recombinant SARS-COV-2 Spike S1+S2 ECD at 2μg/mL (100 μL/well) can bind Recombinant Human ACE2 with a linear range of 0.15-3.03 ng/mL.



Immobilized SARS-COV-2 Spike S Trimer, His Tag at 1μg/ml (100μl/Well). Dose response curve for Human ACE2, hFc Tag with the EC₅₀ of 42.2ng/ml determined by ELISA.