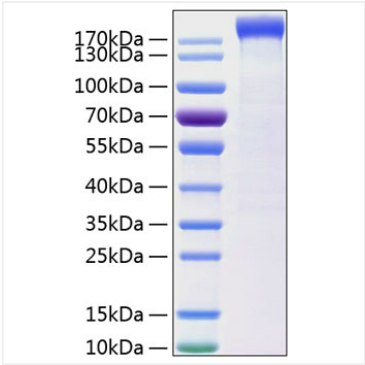
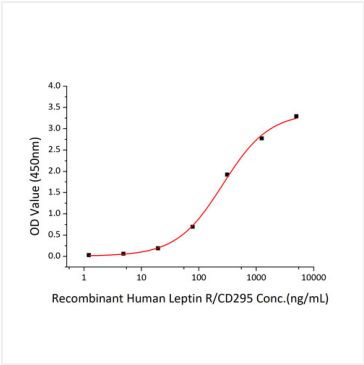


Validation Data



Recombinant Human Leptin receptor/LEP-R/CD295 Protein was determined by SDS-PAGE under reducing conditions with Coomassie Blue.



Immobilized Recombinant Human Leptin protein at 2μg/mL (100 μL/well) can bind Recombinant Human Leptin receptor/LEP-R/CD295 Protein the EC₅₀ of Leptin R/CD295 is 261.45 ng/mL.