

# Recombinant Human GTPase KRas/KRAS Protein

Catalog No.: RP01240

Recombinant

1 Publications

## Sequence Information

Species	Gene ID	Swiss Prot
Human	3845	P01116

### Tags

N-His

### Synonyms

KRAS; C-K-RAS; CFC2; K-RAS2A; K-RAS2B; K-RAS4A; K-RAS4B; KI-RAS; KRAS1; KRAS2; NS; NS3; RALD; RASK2; c-Ki-ras2; GTPase KRas; C-K-RAS; CFC2; K-RAS2A; K-RAS2B; K-RAS4A; K-RAS4B; KI-RAS; KRAS1; KRAS2; NS; NS3; RALD; RASK2; c-Ki-ras2

## Product Information

Source	Purification
<i>E. coli</i>	≥ 85 % as determined by SDS-PAGE.

Calculated MW	Observed MW
22.00 kDa	15-25 kDa

### Endotoxin

< 1 EU/μg of the protein by LAL method.

### Formulation

Lyophilized from a 0.22 μm filtered solution of PBS, pH 7.4. Contact us for customized product form or formulation.

### Reconstitution

Centrifuge the vial before opening. Reconstitute to a concentration of 0.1-0.5 mg/mL in sterile distilled water. Avoid vortex or vigorously pipetting the protein. For long term storage, it is recommended to add a carrier protein or stabilizer (e.g. 0.1% BSA, 5% HSA, 10% FBS or 5% Trehalose), and aliquot the reconstituted protein solution to minimize free-thaw cycles.

## Background

### Basic Information

#### Description

Recombinant Human GTPase KRas/KRAS Protein is produced by *E. coli* expression system. The target protein is expressed with sequence (Thr2-Cys186) of human GTPase KRas/KRAS (Accession #NP\_203524.1) fused with a 6×His tag at the N-terminus.

#### Bio-Activity

#### Shipping

The product is shipped at ambient temperature. Upon receipt, store it immediately at the temperature recommended below.

#### Storage

Store at -20°C. Store the lyophilized protein at -20°C to -80 °C up to 1 year from the date of receipt. After reconstitution, the protein solution is stable at -20°C for 3 months, at 2-8°C for up to 1 week. Avoid repeated freeze/thaw cycles.

#### Operational Notes

For your safety and health, please wear a lab coat and disposable gloves for handling.

## Contact

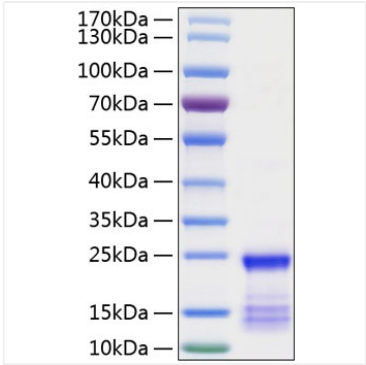
☎ | 400-999-6126

✉ | [cn.market@abclonal.com.cn](mailto:cn.market@abclonal.com.cn)



## Validation Data

---



Recombinant Human GTPase KRas/KRAS  
Protein was determined by SDS-PAGE under  
reducing conditions with Coomassie Blue.