

Recombinant Human IL-12/IL-12A&IL-12B Protein

Catalog No.: RP01232S **Recombinant**

Sequence Information

Species	Gene ID	Swiss Prot
Human	3592&3593	P29459&P29460

Tags
C-His

Synonyms

CLMF;IL12;p70;Interleukin-12;IL12A;P35;NKSF

Product Information

Source	Purification
HEK293 cells	≥ 95% as determined by SDS-PAGE.

Calculated MW	Observed MW
58.38 kDa	60-75 kDa

Endotoxin

< 0.01 EU/μg of the protein by LAL method

Formulation

Lyophilized from a 0.22 μm filtered solution of PBS, pH 7.4.

Reconstitution

Centrifuge the vial before opening.
Reconstitute to a concentration of 0.1-0.5 mg/mL in sterile distilled water.
Avoid vortex or vigorously pipetting the protein. For long term storage, it is recommended to add a carrier protein or stabilizer (e.g. 0.1% BSA, 5% HSA, 10% FBS or 5% Trehalose), and aliquot the reconstituted protein solution to minimize free-thaw cycles.

Contact

☎ | 400-999-6126

✉ | cn.market@abclonal.com.cn

🌐 | www.abclonal.com.cn

Background

Basic Information

Description

Recombinant Human IL-12/IL-12A&IL-12B Protein is produced by HEK293 cells expression system. The target protein is expressed with sequence (IL12B(Ile23-Ser328)-3GGGGSIL12A(Arg23-Ser219)) of Human IL-12/IL-12A&IL-12B (Accession #) fused with a His tag at the C-terminus.

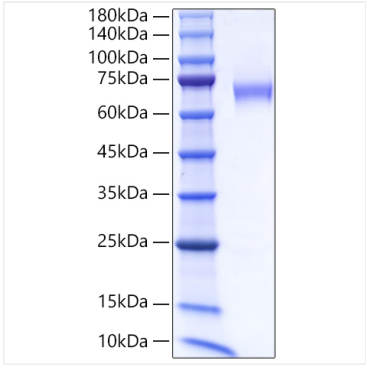
Bio-Activity

Measured by its ability to induce Interferon gamma secretion by human natural killer lymphoma NK-92 cells. The ED₅₀ for this effect is 0.94-3.75 ng/mL, corresponding to a specific activity of 2.67×10⁵~1.06×10⁶ units/mg.

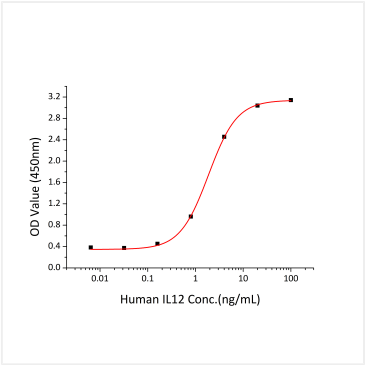
Storage

Store at -20°C. Store the lyophilized protein at -20°C to -80 °C up to 1 year from the date of receipt.
After reconstitution, the protein solution is stable at -20°C for 3 months, at 2-8°C for up to 1 week.
Avoid repeated freeze/thaw cycles.

Validation Data



Recombinant Human IL-12/IL-12A&IL-12B Protein was determined by SDS-PAGE under reducing conditions with Coomassie Blue.



Recombinant Human IL-12/IL-12A&IL-12B Protein induce Interferon gamma secretion by human natural killer lymphoma NK-92 cells. The ED₅₀ for this effect is 0.94-3.75 ng/mL, corresponding to a specific activity of 2.67×10⁵~1.06×10⁶ units/mg.