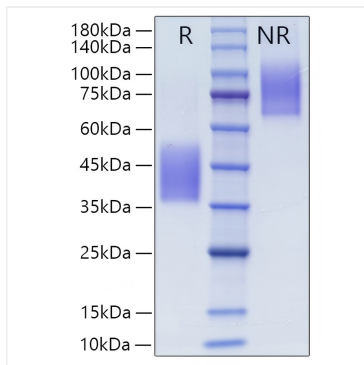
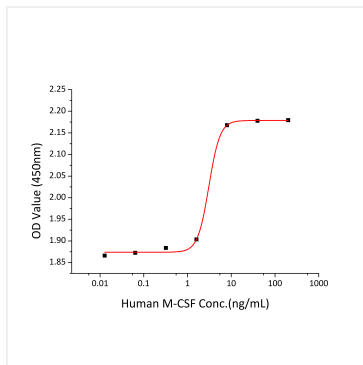


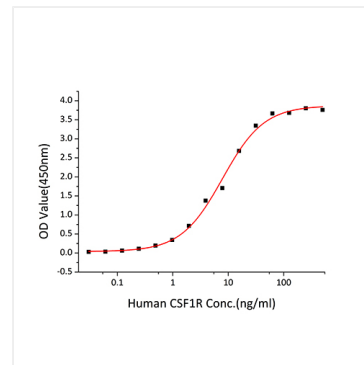
Validation Data



Recombinant Human CSF-1/M-CSF Protein was determined by SDS-PAGE under reducing (R) and non-reducing (NR) conditions.



Recombinant Human M-CSF promotes the proliferation of M-NFS-60 mouse myelogenous leukemia lymphoblast cells. The ED_{50} for this effect is typically 1.53-6.14 ng/mL, corresponding to a specific activity of 1.63×10^5 - 6.53×10^5 units/mg.



Immobilized Human CSF1 at $1 \mu\text{g/mL}$ ($100 \mu\text{L/well}$) can bind Human CSF1R with a linear range of 0.01-7.8 ng/mL.