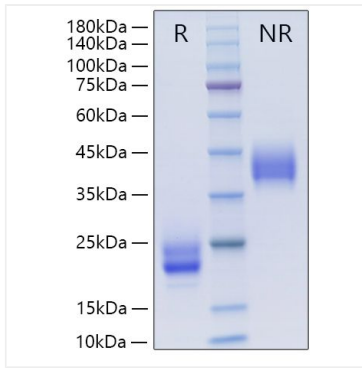
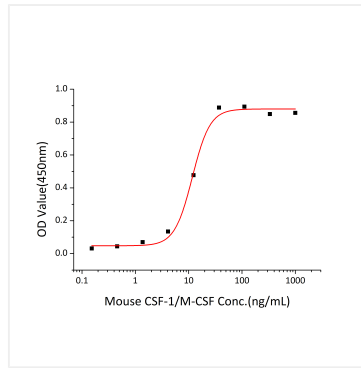


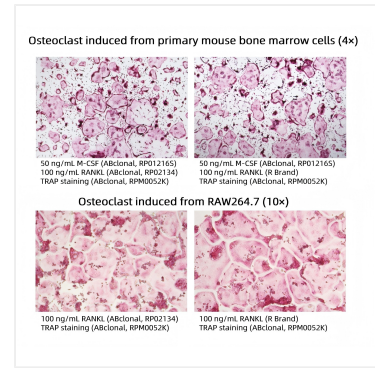
Validation Data



Recombinant Mouse CSF-1/M-CSF Protein was determined by SDS-PAGE under reducing (R) and non-reducing (NR) conditions.



Recombinant Mouse CSF-1/M-CSF stimulates cell proliferation assay using M-NFS-60 mouse myelogenous leukemia lymphoblast cells. The ED_{50} for this effect is 5.84-23.36 ng/mL, corresponding to a specific activity of $4.28 \times 10^4 \sim 1.71 \times 10^5$ units/mg.



Osteoclast induced from primary mouse bone marrow cells.