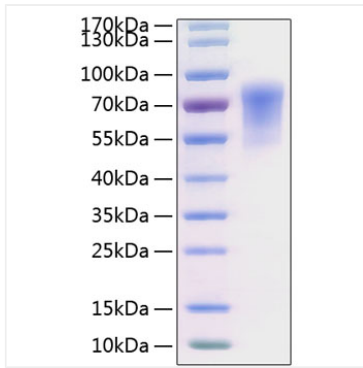


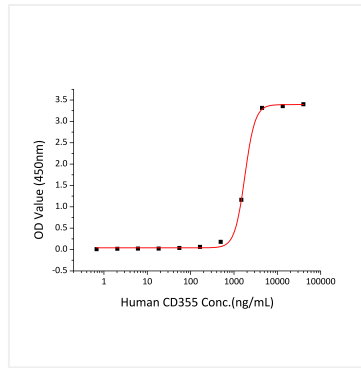


## Validation Data

---



Recombinant Human CADM1/IGSF4A Protein was determined by SDS-PAGE under reducing conditions with Coomassie Blue.



Immobilized Human CADM1 at 2  $\mu\text{g/mL}$  (100  $\mu\text{L/well}$ ) can bind Human CRTAM (Catalog #RP02670) with a linear range of 0.49-1.78  $\mu\text{g/mL}$ .