

Recombinant Human ADAM8/CD156a Protein

Catalog No.: RP01201 **Recombinant**

Sequence Information

Species	Gene ID	Swiss Prot
Human	101	P78325

Tags

C-His

Synonyms

ADAM8;CD156;CD156a;MS2

Product Information

Source	Purification
HEK293 cells	≥ 95 % as determined by SDS-PAGE.

Calculated MW	Observed MW
55.44 kDa	60-70 kDa

Endotoxin

< 1 EU/μg of the protein by LAL method.

Formulation

Lyophilized from a 0.22 μm filtered solution of 50mM Tris, 10mM CaCl₂, 150mM NaCl, pH 7.5. Contact us for customized product form or formulation.

Reconstitution

Centrifuge the vial before opening. Reconstitute to a concentration of 0.1-0.5 mg/mL in sterile distilled water. Avoid vortex or vigorously pipetting the protein. For long term storage, it is recommended to add a carrier protein or stabilizer (e.g. 0.1% BSA, 5% HSA, 10% FBS or 5% Trehalose), and aliquot the reconstituted protein solution to minimize free-thaw cycles.

Contact

☎ | 400-999-6126

✉ | cn.market@abclonal.com.cn

Background

Basic Information

Description

Recombinant Human ADAM8/CD156a Protein is produced by HEK293 cells expression system. The target protein is expressed with sequence (Met1-Pro497) of human ADAM8/CD156a (Accession #NP_001100.3) fused with a 6×His tag at the C-terminus.

Bio-Activity

Measured by its ability to cleave a fluorogenic peptide substrate Mca-PLAQAV-Dpa-RSSSR-NH₂. The specific activity is >2 pmol/min/μg.

Shipping

The product is shipped at ambient temperature. Upon receipt, store it immediately at the temperature recommended below.

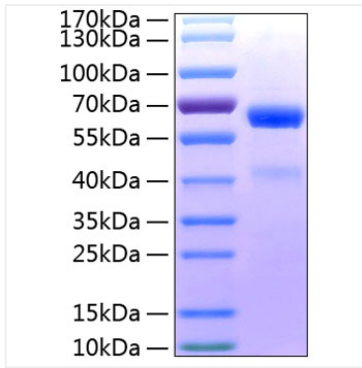
Storage

Store at -20°C. Store the lyophilized protein at -20°C to -80 °C up to 1 year from the date of receipt. After reconstitution, the protein solution is stable at -20°C for 3 months, at 2-8°C for up to 1 week. Avoid repeated freeze/thaw cycles.

Operational Notes

For your safety and health, please wear a lab coat and disposable gloves for handling.

Validation Data



Recombinant Human ADAM8/CD156a Protein was determined by SDS-PAGE under reducing conditions with Coomassie Blue.