

# Active Recombinant Mouse IFN-beta Protein

Catalog No.: RP01076 **Recombinant** **3 Publications**

## Sequence Information

Species	Gene ID	Swiss Prot
Mouse	15977	P01575

### Tags

C-hFc&His

### Synonyms

Fibroblast  
interferon;IFBIFNB;IFF;IFNB1;IFNbeta;IFN-  
beta;interferon beta;;IFNB

## Product Information

Source	Purification
HEK293 cells	> 92% by SDS- PAGE.

### Endotoxin

< 0.1 EU/μg of the protein by LAL  
method.

### Formulation

Lyophilized from a 0.22 μm filtered  
solution of PBS, pH 7.4. Contact us for  
customized product form or formulation.

### Reconstitution

Centrifuge the vial before opening.  
Reconstitute to a concentration of  
0.1-0.5 mg/mL in sterile distilled water.  
Avoid vortex or vigorously pipetting the  
protein. For long term storage, it is  
recommended to add a carrier protein or  
stabilizer (e.g. 0.1% BSA, 5% HSA, 10%  
FBS or 5% Trehalose), and aliquot the  
reconstituted protein solution to  
minimize free-thaw cycles.

## Background

## Basic Information

### Description

Active Recombinant Mouse IFN-beta Protein is produced by HEK293 cells expression system. The target protein is expressed with sequence (Ile22-Asn182) of mouse Interferon beta (Accession #NP\_034640.1) fused with an Fc, 6xHis tag at the C-terminus.

### Bio-Activity

Recombinant Mouse IFN-beta enhances STAT1 autophosphorylation in Bone-marrow-derived macrophage (BMDM). 5-500 ng/mL of Recombinant Mouse IFN-beta can enhance STAT1 autophosphorylation.

### Storage

Store the lyophilized protein at -20°C to -80 °C for long term.  
After reconstitution, the protein solution is stable at -20 °C for 3 months, at 2-8 °C for up to 1 week.  
Avoid repeated freeze/thaw cycles.

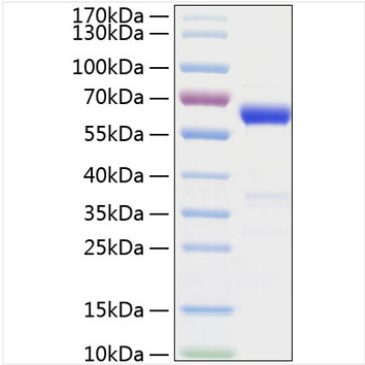
## Contact

 | 400-999-6126

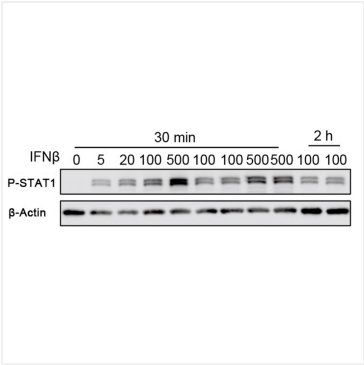
 | [cn.market@abclonal.com.cn](mailto:cn.market@abclonal.com.cn)

 | [www.abclonal.com.cn](http://www.abclonal.com.cn)

Validation Data



Active Recombinant Mouse IFN-beta Protein was determined by SDS-PAGE with Coomassie Blue, showing a band at 60 kDa.



Recombinant Mouse IFN-beta enhances STAT1 autophosphorylation in Bone-marrow-derived macrophage (BMDM). 5-500 ng/mL of Recombinant Mouse IFN-beta can enhance STAT1 autophosphorylation.