

# Recombinant Mouse c-Kit ligand/KITLG/SCF Protein

Catalog No.: RP01055 **Recombinant** **1 Publications**

## Sequence Information

Species	Gene ID	Swiss Prot
Mouse	17311	P20826-1

### Tags

C-His

### Synonyms

KITLG;FPH2;KL-1;Kitl;MGF;SCF;SF;SHEP7;KL;SCF/KITLG

## Product Information

Source	Purification
HEK293 cells	≥ 95 % as determined by SDS-PAGE; ≥ 95 % as determined by HPLC.

Calculated MW	Observed MW
19.14 kDa	18-38 kDa

### Endotoxin

< 0.1 EU/μg of the protein by LAL method.

### Formulation

Lyophilized from a 0.22 μm filtered solution of PBS, pH 7.4. Contact us for customized product form or formulation.

### Reconstitution

Centrifuge the vial before opening. Reconstitute to a concentration of 0.1-0.5 mg/mL in sterile distilled water. Avoid vortex or vigorously pipetting the protein. For long term storage, it is recommended to add a carrier protein or stabilizer (e.g. 0.1% BSA, 5% HSA, 10% FBS or 5% Trehalose), and aliquot the reconstituted protein solution to minimize free-thaw cycles.

## Contact

☎	400-999-6126
✉	cn.market@abclonal.com.cn

## Background

### Basic Information

#### Description

Recombinant Mouse c-Kit ligand/KITLG/SCF Protein is produced by HEK293 expression system. The target protein is expressed with sequence (Lys26-Ala189) of mouse SCF (Accession #NP\_038626.1.) fused with a 6×His tag at the C-terminus.

#### Bio-Activity

1. Measured in a cell proliferation assay using TF-1 human erythroleukemic cells. The ED<sub>50</sub> for this effect is 0.5-1.0 ng/mL, corresponding to a specific activity of 1.0×10<sup>6</sup>-2.0×10<sup>6</sup> units/mg. | 2. Measured by its binding ability in a functional ELISA. Immobilized recombinant Mouse SCF at 2 μg/mL (100 μL/well) can bind recombinant human CD117 with a linear range of 1.5-10 ng/mL.

#### Shipping

The product is shipped at ambient temperature. Upon receipt, store it immediately at the temperature recommended below.

#### Storage

Store at -20°C. Store the lyophilized protein at -20°C to -80 °C up to 1 year from the date of receipt.

After reconstitution, the protein solution is stable at -20°C for 3 months, at 2-8°C for up to 1 week.

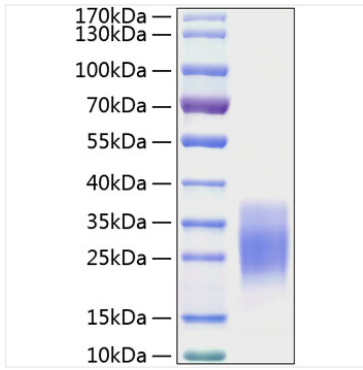
Avoid repeated freeze/thaw cycles.

#### Operational Notes

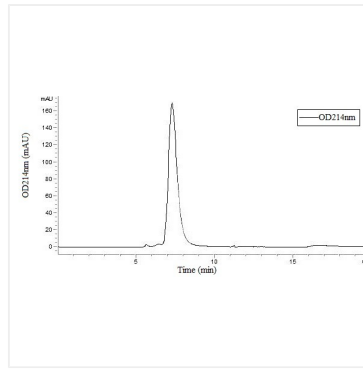
For your safety and health, please wear a lab coat and disposable gloves for handling.



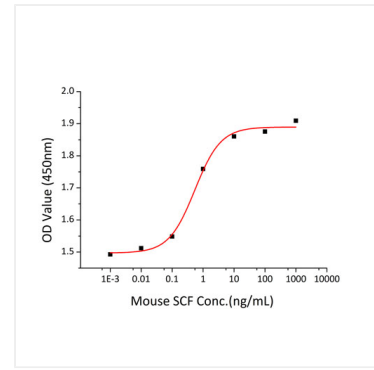
## Validation Data



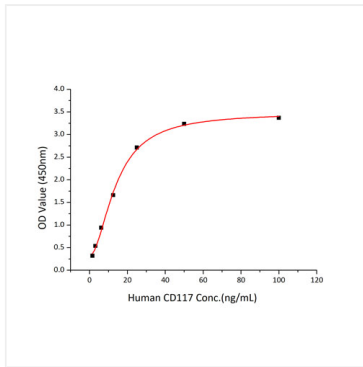
Recombinant Mouse c-Kit ligand/KITLG/SCF Protein was determined by SDS-PAGE under reducing conditions with Coomassie Blue.



Recombinant Mouse c-Kit ligand/KITLG/SCF Protein is greater than 95% as determined by SEC-HPLC.



Recombinant Mouse SCF stimulates cell proliferation of the TF-1 human erythroleukemic cells. The ED<sub>50</sub> for this effect is 0.5-1.0 ng/mL, corresponding to a specific activity of 1.0×10<sup>6</sup>-2.0×10<sup>6</sup> units/mg.



Immobilized recombinant Mouse SCF at 2 µg/mL (100 µL/well) can bind recombinant human CD117 with a linear range of 1.5-10ng/mL.