

Recombinant Human CTLA-4/CD152 Protein

Catalog No.: RP01044 **Recombinant**

Sequence Information

Species	Gene ID	Swiss Prot
Human	1493	P16410

Tags

C-His

Synonyms

CTLA4;ALPS5;CD;CD152;CELIAC3;CTLA-4
;GRD4;GSE;IDDM12

Product Information

Source	Purification
HEK293 cells	> 90% by SDS-PAGE.

Endotoxin

< 1.0 EU/μg of the protein by LAL method.

Formulation

Lyophilized from a 0.22 μm filtered solution of PBS, pH 7.4. Contact us for customized product form or formulation.

Reconstitution

Centrifuge the vial before opening. Reconstitute to a concentration of 0.1-0.5 mg/mL in sterile distilled water. Avoid vortex or vigorously pipetting the protein. For long term storage, it is recommended to add a carrier protein or stabilizer (e.g. 0.1% BSA, 5% HSA, 10% FBS or 5% Trehalose), and aliquot the reconstituted protein solution to minimize free-thaw cycles.

Background

Basic Information

Description

Recombinant Human CTLA-4/CD152 Protein is produced by HEK293 cells expression system. The target protein is expressed with sequence (Ala37-Phe162) of human CTLA-4 (Accession #NP_005205.2) fused with a 6×His tag at the C-terminus.

Bio-Activity

Measured by its binding ability in a functional ELISA. Immobilized Ipilimumab at 1 μg/mL (100 μL/well) can bind Recombinant Human CTLA-4 with a linear range of 6-18 ng/mL. 2. Measured by its binding ability in a functional ELISA. Immobilized PE anti-human CD152 (CTLA-4) Antibody at 1 μg/mL (25 μL/well) can bind Human CTLA-4 with a linear range of 0.46-2.05 ng/mL.

Storage

Store the lyophilized protein at -20°C to -80 °C for long term.

After reconstitution, the protein solution is stable at -20 °C for 3 months, at 2-8 °C for up to 1 week.

Avoid repeated freeze/thaw cycles.

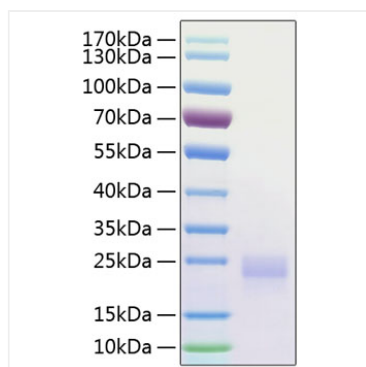
Contact

☎ | 400-999-6126

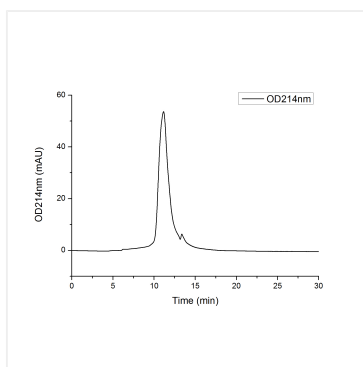
✉ | cn.market@abclonal.com.cn

🌐 | www.abclonal.com.cn

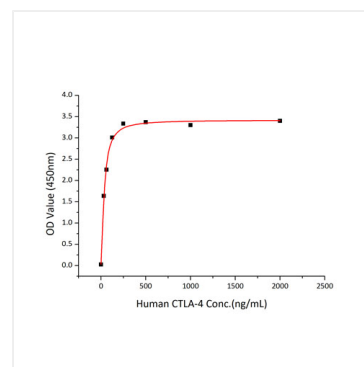
Validation Data



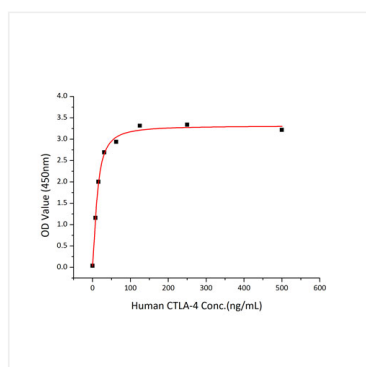
Recombinant Human CTLA-4/CD152 Protein was determined by SDS-PAGE with Coomassie Blue, showing a band at 25 kDa.



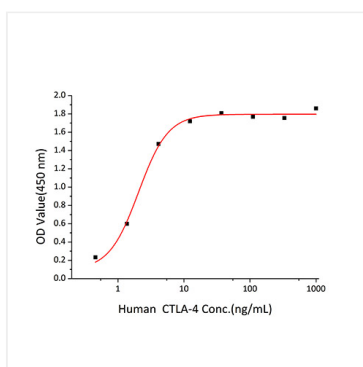
The purity of Human CTLA-4 Protein (Cat.RP01044) was greater than 90% as determined by SEC-HPLC.



Immobilized Recombinant Mouse CD86 at 2 $\mu\text{g/mL}$ (100 $\mu\text{L/well}$) can bind Recombinant Human CTLA-4 with a linear range of 15-50 ng/mL.



Immobilized Ipilimumab at 1 $\mu\text{g/mL}$ (100 $\mu\text{L/well}$) can bind Recombinant Human CTLA-4 with a linear range of 6-18 ng/mL.



Immobilized PE anti-human CD152 (CTLA-4) Antibody at 1 $\mu\text{g/mL}$ (25 $\mu\text{L/well}$) can bind Human CTLA-4 with a linear range of 0.46-2.05 ng/mL.