

**Catalog No.:** RP01030   **Recombinant**   **2 Publications**

Species	Gene ID	Swiss Prot
Human	1950	P01133

## C-hFc&amp;His

## EGF:HOMG4:URG

<b>Source</b>	<b>Purification</b>
HEK293 cells	≥ 90 % as determined by SDS-PAGE

Calculated MW	Observed MW
33.01 kDa	40 kDa

< 0.1 EU/μg of the protein by LAL method.

Lyophilized from a 0.22  $\mu\text{m}$  filtered solution of PBS, pH 7.4. Contact us for customized product form or formulation.

Centrifuge the vial before opening. Reconstitute to a concentration of 0.1-0.5 mg/mL in sterile distilled water. Avoid vortex or vigorously pipetting the protein. For long term storage, it is recommended to add a carrier protein or stabilizer (e.g. 0.1% BSA, 5% HSA, 10% FBS or 5% Trehalose), and aliquot the reconstituted protein solution to minimize free-thaw cycles.

 | 400-999-6126

 | [cn.market@abclonal.com.cn](mailto:cn.market@abclonal.com.cn)

 | [www.abclonal.com.cn](http://www.abclonal.com.cn)

Epidermal growth factor (EGF) is the founding member of the EGF family that also includes TGF- $\alpha$ , amphiregulin (AR), betacellulin (BTC), epiregulin (EPR), heparin binding EGF like growth factor (HB x005f

Recombinant Human EGF Protein is produced by HEK293 cells expression system. The target protein is expressed with sequence (Asn 971-Arg 1023) of human EGF (Accession #NP\_001954.2) fused with hFc. 6xHis tag at the C-terminus.

1. Measured by its ability to stimulate EGF Receptor autophosphorylation in A431 cells. 1-10 ng/mL of Recombinant Human EGF can effectively enhance EGF Receptor autophosphorylation. 2. Measured by its binding ability in a functional ELISA. Immobilized Human EGFR at 5 µg/mL (100 µL/well) can bind Human EGF with a linear range of 7-25 ng/mL. 3. Measured in a cell proliferation assay using BALB/c 3T3 mouse embryonic fibroblasts. The ED<sub>50</sub> for this effect is typically 0.065-0.26 ng/mL, corresponding to a specific activity of  $3.84 \times 10^6$ - $1.54 \times 10^7$  units/mg.

The product is shipped at ambient temperature. Upon receipt, store it immediately at the temperature recommended below.

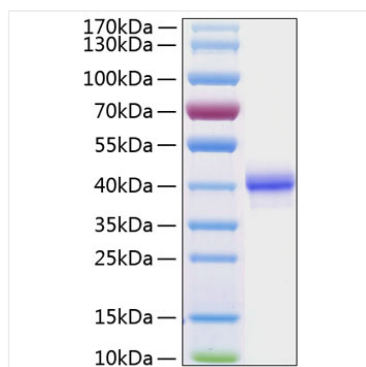
Store at -20°C. Store the lyophilized protein at -20°C to -80 °C up to 1 year from the date of receipt.

After reconstitution, the protein solution is stable at -20°C for 3 months, at 2-8°C for up to 1 week.

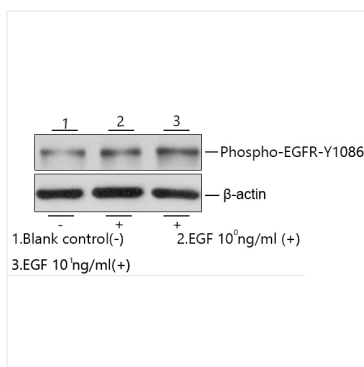
Avoid repeated freeze/thaw cycles.

For your safety and health, please wear a lab coat and disposable gloves for handling.

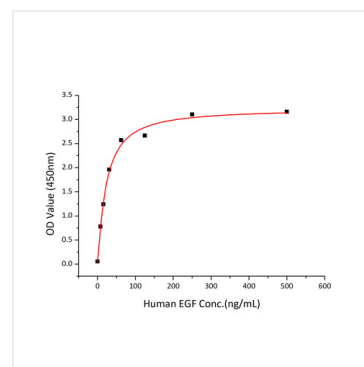
## Validation Data



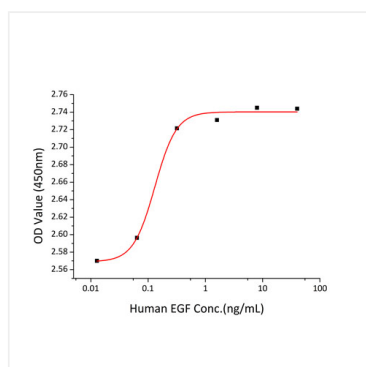
Recombinant Human EGF Protein was determined by SDS-PAGE under reducing conditions with Coomassie Blue.



Recombinant Human EGF enhances EGF Receptor autophosphorylation in A431 cells. 1-10 ng/mL of Recombinant Human EGF can effectively enhance EGF Receptor autophosphorylation.



Immobilized Human EGFR at 5  $\mu\text{g/mL}$  (100  $\mu\text{L/well}$ ) can bind Human EGF with a linear range of 7-25 ng/mL.



Recombinant Human EGF promotes the proliferation of BALB/c 3T3 mouse embryonic fibroblasts cells. The  $\text{ED}_{50}$  for this effect is typically 0.065-0.26 ng/mL, corresponding to a specific activity of  $3.84 \times 10^6$ - $1.54 \times 10^7$  units/mg.