

**Catalog No.: RP01027** **Recombinant**

| Species | Gene ID | Swiss Prot |
|---------|---------|------------|
| Human   | 3916    | P11279-1   |

## C-His

LAMP1; CD107a; LAMPa; LGP120;  
lysosomal associated membrane protein  
1;CD107a;LAMPa;LGP120

|               |                                  |
|---------------|----------------------------------|
| <b>Source</b> | <b>Purification</b>              |
| HEK293 cells  | ≥ 95 % as determined by SDS-PAGE |

| Calculated MW | Observed MW |
|---------------|-------------|
| 39.23 kDa     | 60-80 kDa   |

< 0.1 EU/μg of the protein by LAL method.

Lyophilized from a 0.22  $\mu\text{m}$  filtered solution of PBS, pH 7.4. Contact us for customized product form or formulation.

Centrifuge the vial before opening. Reconstitute to a concentration of 0.1-0.5 mg/mL in sterile distilled water. Avoid vortex or vigorously pipetting the protein. For long term storage, it is recommended to add a carrier protein or stabilizer (e.g. 0.1% BSA, 5% HSA, 10% FBS or 5% Trehalose), and aliquot the reconstituted protein solution to minimize free-thaw cycles.

 | 400-999-6126

 | [cn.market@abclonal.com.cn](mailto:cn.market@abclonal.com.cn)

 | [www.abclonal.com.cn](http://www.abclonal.com.cn)

Lysosomal associated membrane protein 1 (LAMP1), also known as CD107a, is a single-pass type I membrane protein which belongs to the LAMP family. LAMP-1 is a glycoprotein highly expressed in lysosomal membranes. This glycoprotein provides selectins with carbohydrate ligands. It may also play a role in tumor cell metastasis. LAMP-1 acts as a receptor for Lassa virus protein. LAMP1 is presented on the plasma membrane during the activation of NK cells, CD8+ T cells, mast cells, basophils, monocytes, and platelets.

Recombinant Human LAMP-1/CD107a Protein is produced by HEK293 cells expression system. The target protein is expressed with sequence (Ala29-Met382) of human LAMP1 (Accession #NP\_005552.3) fused with a 6×His tag at the C-terminus.

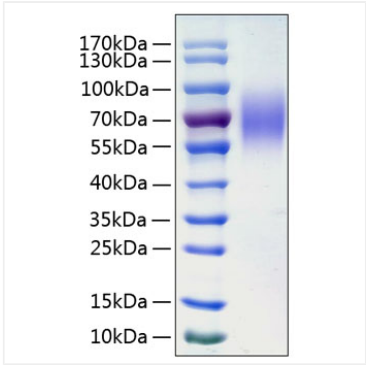
Measured by its binding ability in a functional ELISA. Immobilized Human LAMP1 at 1  $\mu\text{g/mL}$  (100  $\mu\text{L/well}$ ) can bind LAMP1 Rabbit pAb with a linear range of 1-8.5  $\text{ng/mL}$ .

Store at -20°C. Store the lyophilized protein at -20°C to -80 °C up to 1 year from the date of receipt.

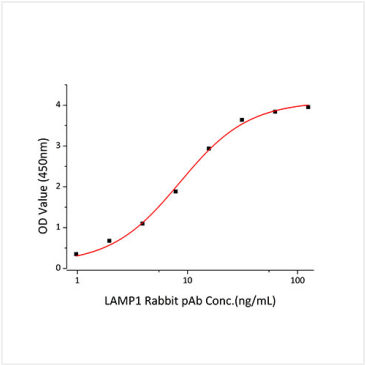
After reconstitution, the protein solution is stable at -20°C for 3 months, at 2-8°C for up to 1 week.

Avoid repeated freeze/thaw cycles.

# Validation Data



Recombinant Human LAMP-1/CD107a Protein was determined by SDS-PAGE under reducing conditions with Coomassie Blue.



Immobilized recombinant Human LAMP1 at 1μg/mL (100 μL/well) can bind LAMP1 Rabbit pAb with a linear range of 1-8.5ng/mL.