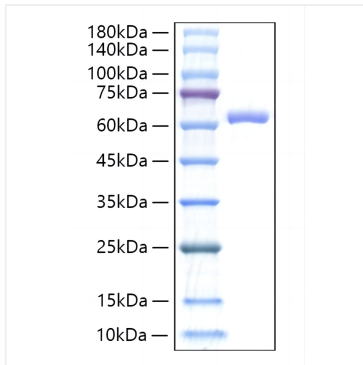
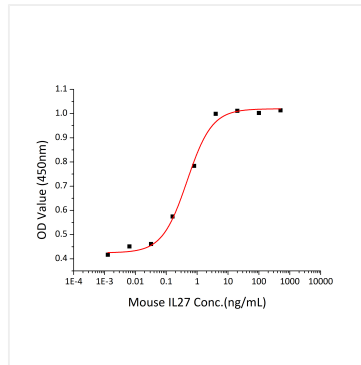


Validation Data



Recombinant Mouse IL-27/IL-27A&IL-27B Protein was determined by SDS-PAGE under reducing conditions with Coomassie Blue.



Recombinant Mouse IL-27/IL-27A&IL-27B Protein promote the proliferation of TF-1 Human erythroleukemic cells. The ED_{50} for this effect is 0.24-0.94 ng/mL, corresponding to a specific activity of $1.06 \times 10^6 \sim 4.17 \times 10^6$ units/mg.