

# Recombinant Mouse Alkaline Phosphatase (Germ type) /ALPG Protein

www.abclonal.com

Catalog No.: RP00680 **Recombinant**

## Sequence Information

Species	Gene ID	Swiss Prot
Mouse	11650	P24823

### Tags

C-6His

### Synonyms

Alpg; Akp5; Alpl2; Eap; Alkaline phosphatase; germ cell type; EAP; Alkaline phosphatase 5

## Product Information

Source	Purification
HEK293 cells	≥ 90 % as determined by SDS-PAGE.

Calculated MW	Observed MW
53.29 kDa	60-75 kDa

### Endotoxin

< 1 EU/μg of the protein by LAL method.

### Formulation

Lyophilized from a 0.2 μm filtered solution of PBS, pH 7.4.

### Reconstitution

Centrifuge the vial before opening. Reconstitute to a concentration of 0.1-0.5 mg/mL in sterile distilled water. Avoid vortex or vigorously pipetting the protein. For long term storage, it is recommended to add a carrier protein or stabilizer (e.g. 0.1% BSA, 5% HSA, 10% FBS or 5% Trehalose), and aliquot the reconstituted protein solution to minimize free-thaw cycles.

## Contact

☎ | 400-999-6126

✉ | [cn.market@abclonal.com.cn](mailto:cn.market@abclonal.com.cn)

🌐 | [www.abclonal.com.cn](http://www.abclonal.com.cn)

## Background

Alkaline phosphatase that can hydrolyze various phosphate compounds

## Basic Information

### Description

Recombinant Mouse Alkaline Phosphatase (Germ type) /ALPG Protein is produced by HEK293 cells expression system. The target protein is expressed with sequence (Val19-Ser501) of Mouse Alkaline Phosphatase (Germ type) /ALPG (Accession #NP\_031459.3) fused with His tag at the C-terminus.

### Bio-Activity

### Storage

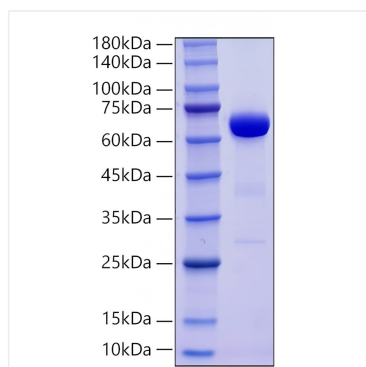
Store at -20°C. Store the lyophilized protein at -20°C to -80 °C up to 1 year from the date of receipt.

After reconstitution, the protein solution is stable at -20°C for 3 months, at 2-8°C for up to 1 week.

Avoid repeated freeze/thaw cycles.

## Validation Data

---



Recombinant Mouse Alkaline Phosphatase (Germ type) /ALPG Protein was determined by SDS-PAGE under reducing conditions with Coomassie Blue.