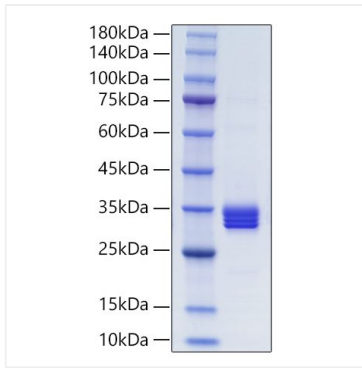
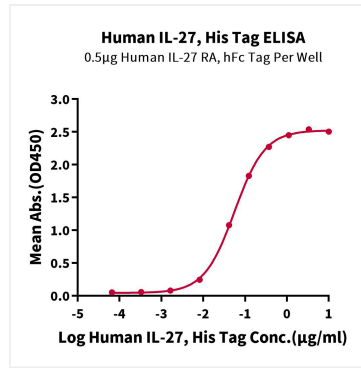




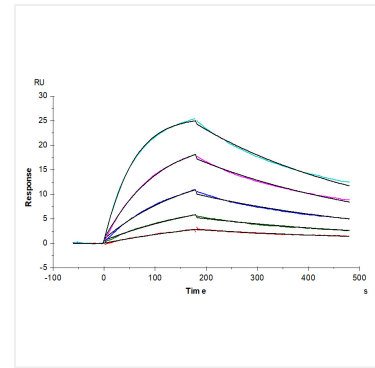
## Validation Data



Recombinant Human IL-27/IL-27A&IL-27B Protein was determined by SDS-PAGE under reducing conditions with Coomassie Blue.



Immobilized Human IL-27 RA, hFc Tag at 5 µg/mL (100 µL/well) on the plate. Dose response curve for Human IL-27, His Tag with the  $EC_{50}$  of 55.9ng/mL determined by ELISA (QC Test).



Human IL-27 RA, hFc Tag captured on CM5 Chip via Protein A can bind Human IL-27, His Tag with an affinity constant of 3.58 nM as determined in SPR assay (Biacore T200).