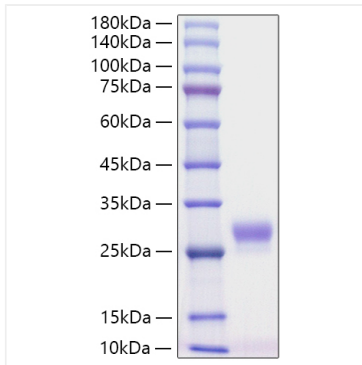
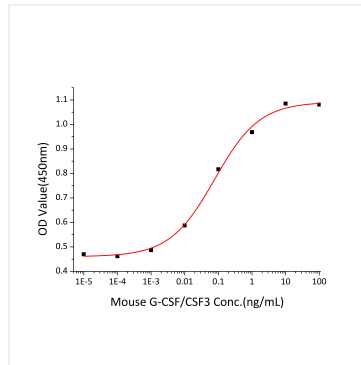


Validation Data



Recombinant Mouse CSF-3/G-CSF Protein was determined by SDS-PAGE under reducing conditions with Coomassie Blue.



Recombinant Mouse G-CSF/CSF3 stimulates cell proliferation of the NFS-60 mouse myelogenous leukemia lymphoblast cells. The ED₅₀ for this effect is 38.7-154.8 pg/mL, corresponding to a specific activity of 6.46×10^6 - 2.58×10^7 units/mg.