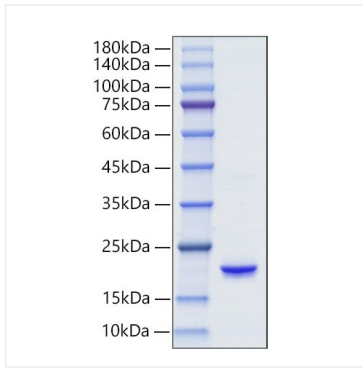


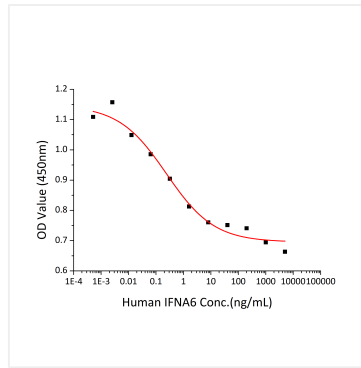


## Validation Data

---



Recombinant Human IFN-alpha 6 Protein was determined by SDS-PAGE under reducing conditions with Coomassie Blue.



Recombinant Human IFNA6/IFN-alpha 6/LeIF K Protein cytotoxicity assay using TF-1 cells. The ED<sub>50</sub> for this effect is 0.12-0.48 ng/mL, corresponding to a specific activity of 2.50×10<sup>6</sup>~8.33×10<sup>6</sup> units/mg.