

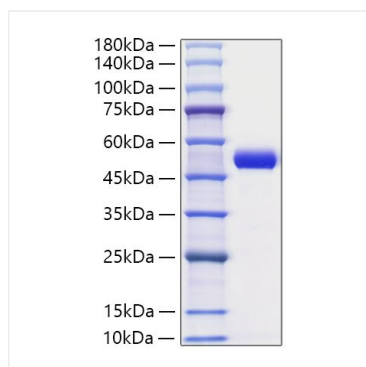
**Catalog No.: RP00532** **Recombinant**

\* □□□□□□□□□□□□□□□□□□□□□□□□

**Storage**  
Store at -20°C. Store the lyophilized protein at -20°C to -80 °C up to 1 year from the date of receipt.  
After reconstitution, the protein solution is stable at -20°C for 3 months, at 2-8°C for up to 1 week.  
Avoid repeated freeze/thaw cycles.

## Validation Data

---



Recombinant Human Serpin E1/PAI-1 Protein was determined by SDS-PAGE under reducing conditions with Coomassie Blue.