

# Recombinant Human Fc-epsilon RI-alpha/FCER1A Protein

Catalog No.: RP00489 **Recombinant**

## Sequence Information

Species	Gene ID	Swiss Prot
Human	2205	P12319-1

### Tags

C-hFc

### Synonyms

Fc-epsilon RI-alpha; FcERI; FCER1A; FCE1A

## Product Information

Source	Purification
HEK293 cells	≥ 95 % as determined by SDS-PAGE; ≥ 95 % as determined by HPLC.

Calculated MW	Observed MW
47.8 kDa	70-78 kDa

### Endotoxin

< 1 EU/μg of the protein by LAL method.

### Formulation

Lyophilized from 0.22 μm filtered solution in PBS (pH 7.4). Normally 8% trehalose is added as protectant before lyophilization.

### Reconstitution

Centrifuge the vial before opening. Reconstitute to a concentration of 0.1-0.5 mg/mL in sterile distilled water. Avoid vortex or vigorously pipetting the protein. For long term storage, it is recommended to add a carrier protein or stabilizer (e.g. 0.1% BSA, 5% HSA, 10% FBS or 5% Trehalose), and aliquot the reconstituted protein solution to minimize free-thaw cycles.

## Background

Known susceptibility genes to atopy and asthma have been identified by linkage or associations with clinical phenotypes, including total serum IgE levels. IgE-mediated sensitivity reactions require a high-affinity IgE receptor (FcεRI), which immobilizes the immunoglobulin on the surface of the effector cells, mostly mast cells and basophils. Similarly to the previously investigated beta subunit of the receptor, FCER1A is a good candidate for a quantitative trait locus (QTL) in allergic diseases, and appears to participate in the systemic regulation of IgE levels.

## Basic Information

### Description

Recombinant Human Fc-epsilon RI-alpha/FCER1A Protein is produced by HEK293 cells expression system. The target protein is expressed with sequence (Val26-Gln205) of Human Fc-epsilon RI-alpha/FCER1A (Accession #P12319-1) fused with a C-hFc tag at the C-terminus.

### Bio-Activity

### Shipping

The product is shipped at ambient temperature. Upon receipt, store it immediately at the temperature recommended below.

### Storage

Store at -20°C. Store the lyophilized protein at -20°C to -80 °C up to 1 year from the date of receipt.

After reconstitution, the protein solution is stable at -20°C for 3 months, at 2-8°C for up to 1 week.

Avoid repeated freeze/thaw cycles.

### Operational Notes

For your safety and health, please wear a lab coat and disposable gloves for handling.

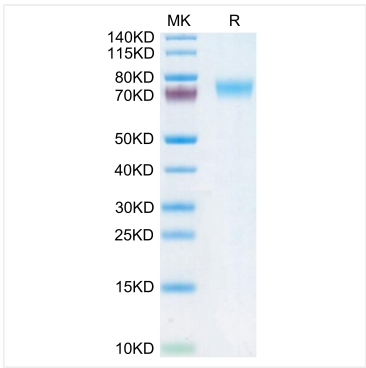
## Contact

☎ | 400-999-6126

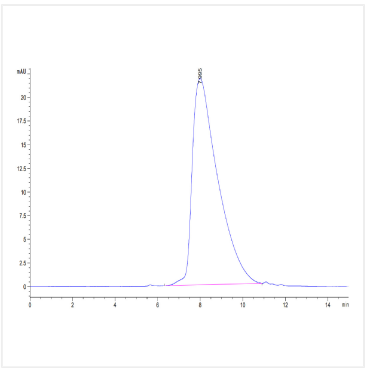
✉ | [cn.market@abclonal.com.cn](mailto:cn.market@abclonal.com.cn)



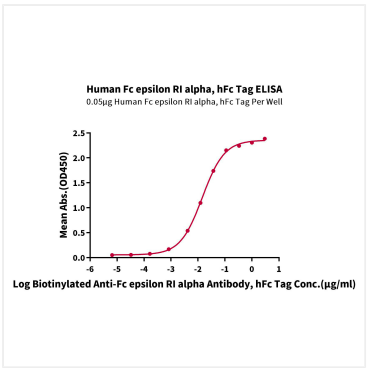
Validation Data



Recombinant Human Fc-epsilon RI-alpha/FCER1A Protein was determined by Tris-Bis PAGE under reducing conditions.



The purity of Human Fc epsilon RI alpha is greater than 95% as determined by SEC-HPLC.



Immobilized Human Fc epsilon RI alpha, hFc Tag at 0.5 µg/mL (100 µL/Well) on the plate. Dose response curve for Biotinylated Anti-Fc epsilon RI alpha Antibody, hFc Tag with the EC<sub>50</sub> 14.5ng/mL determined by ELISA.