

# Recombinant Human KLRB1/CD161 Protein

Catalog No.: RP00430 **Recombinant**

## Sequence Information

Species	Gene ID	Swiss Prot
Human	3820	Q12918-1

### Tags

C-His

### Synonyms

KLRB1; CLEC5B; NKRP1A; NKR-P1A; HNKR-P1a; CD161; Ly59; NKR; NKRP1; NKR-P1; NKRP1ANKR

## Product Information

Source	Purification
HEK293 cells	≥ 95 % as determined by SDS-PAGE; ≥ 95 % as determined by HPLC.

Calculated MW	Observed MW
19.6 kDa	38-45 kDa

### Endotoxin

< 1 EU/μg of the protein by LAL method.

### Formulation

Lyophilized from 0.22 μm filtered solution in PBS (pH 7.4). Normally 8% trehalose is added as protectant before lyophilization.

### Reconstitution

Centrifuge the vial before opening. Reconstitute to a concentration of 0.1-0.5 mg/mL in sterile distilled water. Avoid vortex or vigorously pipetting the protein. For long term storage, it is recommended to add a carrier protein or stabilizer (e.g. 0.1% BSA, 5% HSA, 10% FBS or 5% Trehalose), and aliquot the reconstituted protein solution to minimize free-thaw cycles.

## Contact

☎ | 400-999-6126

✉ | [cn.market@abclonal.com.cn](mailto:cn.market@abclonal.com.cn)

## Background

CD161 (NKRP1) is a lectin-like receptor present on NK cells and rare T-cell subsets. We have observed CD161 expression in some cases of T-cell prolymphocytic leukemia (T-PLL) and found it to be useful in follow-up and detection of disease after treatment.

## Basic Information

### Description

Recombinant Human KLRB1/CD161 Protein is produced by HEK293 cells expression system. The target protein is expressed with sequence (Gln67-Ser225) of Human KLRB1/CD161 (Accession #Q12918-1) fused with a C-His tag at the C-terminus.

### Bio-Activity

### Shipping

The product is shipped at ambient temperature. Upon receipt, store it immediately at the temperature recommended below.

### Storage

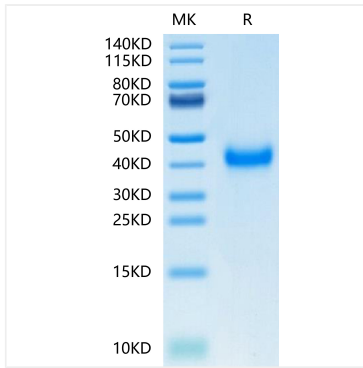
Store at -20°C. Store the lyophilized protein at -20°C to -80 °C up to 1 year from the date of receipt. After reconstitution, the protein solution is stable at -20°C for 3 months, at 2-8°C for up to 1 week. Avoid repeated freeze/thaw cycles.

### Operational Notes

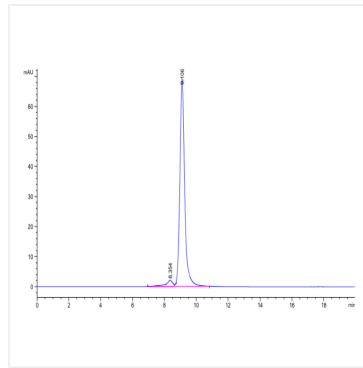
For your safety and health, please wear a lab coat and disposable gloves for handling.



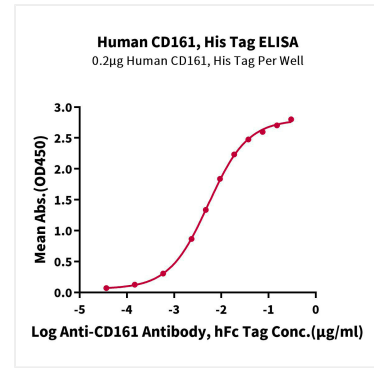
## Validation Data



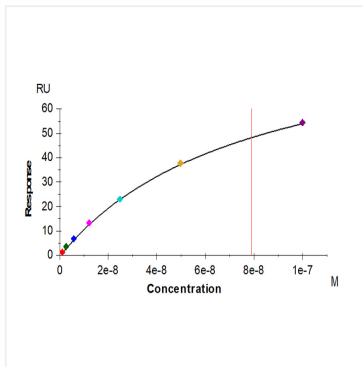
Recombinant Human KLRB1/CD161 Protein was determined by Tris-Bis PAGE under reducing conditions.



The purity of Human CD161 is greater than 95% as determined by SEC-HPLC.



Immobilized Human CD161, His Tag at 2 µg/mL (100 µL/Well) on the plate. Dose response curve for Anti-CD161 Antibody, hFc Tag with the EC<sub>50</sub> of 5.3ng/mL determined by ELISA (QC Test).



Anti-CD161 Antibody, hFc tag captured on CM5 Chip via Anti-hFc IgG can bind Human CD161, His Tag with an affinity constant of 78.8 nM as determined in SPR assay (Biacore T200).