

Recombinant Human Siglec-8 Protein

Catalog No.: RP00333 **Recombinant**

Sequence Information

Species	Gene ID	Swiss Prot
Human	27181	Q9NYZ4

Tags

C-hFc

Synonyms

CDw329; MGC59785; SAF2; SAF2SAF-2;
Siglec-8; SIGLEC8L; SIGLEC8

Product Information

Source	Purification
HEK293 cells	≥ 95 % as determined by SDS-PAGE; ≥ 95 % as determined by HPLC.

Calculated MW	Observed MW
64.6 kDa	70-82 kDa

Endotoxin

< 1 EU/μg of the protein by LAL method.

Formulation

Lyophilized from 0.22 μm filtered solution in PBS (pH 7.4). Normally 8% trehalose is added as protectant before lyophilization.

Reconstitution

Centrifuge the vial before opening. Reconstitute to a concentration of 0.1-0.5 mg/mL in sterile distilled water. Avoid vortex or vigorously pipetting the protein. For long term storage, it is recommended to add a carrier protein or stabilizer (e.g. 0.1% BSA, 5% HSA, 10% FBS or 5% Trehalose), and aliquot the reconstituted protein solution to minimize free-thaw cycles.

Background

Siglec-8, also known as SAF, is an approximately 75 kDa transmembrane glycoprotein in the Siglec family of sialic acid-binding immune regulatory molecules. Mature human Siglec-8 consists of a 347 amino acid (aa) extracellular domain (ECD) with three Ig-like domains. Putative adhesion molecule that mediates sialic-acid dependent binding to red blood cells. Preferentially binds to alpha-2,3-linked sialic acid. Also binds to alpha-2,6-linked sialic acid.

Basic Information

Description

Recombinant Human Siglec-8 Protein is produced by HEK293 cells expression system. The target protein is expressed with sequence (Met17-Ala363) of Human Siglec-8 (Accession #Q9NYZ4) fused with a C-hFc tag at the C-terminus.

Bio-Activity

Shipping

The product is shipped at ambient temperature. Upon receipt, store it immediately at the temperature recommended below.

Storage

Store at -20°C. Store the lyophilized protein at -20°C to -80 °C up to 1 year from the date of receipt. After reconstitution, the protein solution is stable at -20°C for 3 months, at 2-8°C for up to 1 week. Avoid repeated freeze/thaw cycles.

Operational Notes

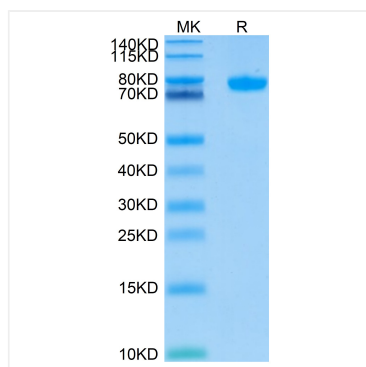
For your safety and health, please wear a lab coat and disposable gloves for handling.

Contact

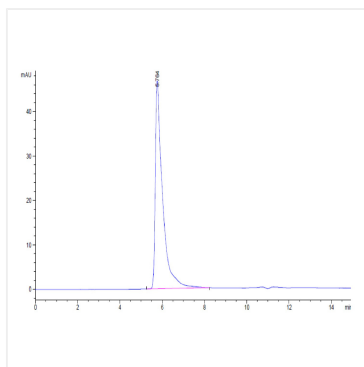
☎		400-999-6126
✉		cn.market@abclonal.com.cn



Validation Data



Recombinant Human Siglec-8 Protein was determined by Tris-Bis PAGE under reducing conditions.



The purity of Human Siglec-8 is greater than 95% as determined by SEC-HPLC.