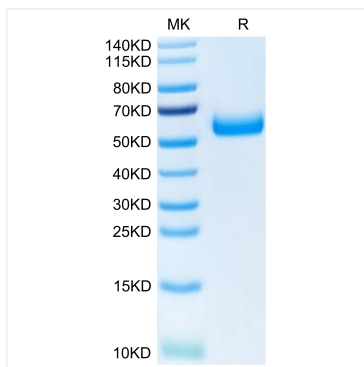
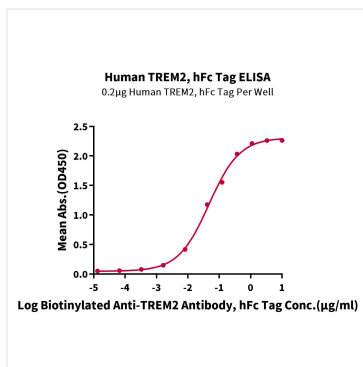


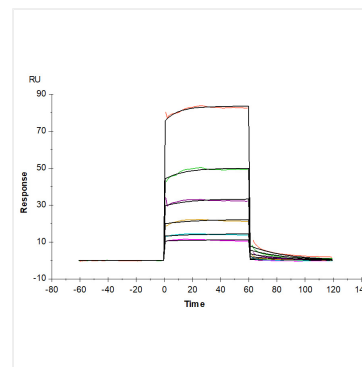
Validation Data



Recombinant Human TREM2 Protein was determined by Tris-Bis PAGE under reducing conditions.



Immobilized Human TREM2, hFc Tag at 2 µg/mL (100 µL/Well) on the plate. Dose response curve for Biotinylated Anti-TREM2 Antibody, hFc Tag with the EC_{50} of 46.9ng/mL determined by ELISA (QC Test).



Human TREM2, hFc Tag captured on CM5 Chip via Protein A can bind Human APOE3, His Tag with an affinity constant of 1.21 µM as determined in SPR assay (Biacore T200).