

Catalog No.: RP00201 **Recombinant** **4 Publications**

Species	Gene ID	Swiss Prot
Human	3569	P05231

C-His

IL6;BSF-2;BSF2;CDF;HGF;HSF;IFN-
beta-2;IFNB2;IL-6

Source	Purification
HEK293 cells	≥ 95 % as determined by SDS-PAGE

Calculated MW	Observed MW
21.65 kDa	23-30

< 0.1 EU/μg of the protein by LAL method.

Lyophilized from a 0.22 μm filtered solution of PBS, pH 7.4. Contact us for customized product form or formulation.

Centrifuge the vial before opening. Reconstitute to a concentration of 0.1-0.5 mg/mL in sterile distilled water. Avoid vortex or vigorously pipetting the protein. For long term storage, it is recommended to add a carrier protein or stabilizer (e.g. 0.1% BSA, 5% HSA, 10% FBS or 5% Trehalose), and aliquot the reconstituted protein solution to minimize freeze-thaw cycles.

 | 400-999-6126

 | cn.market@abclonal.com.cn

 | www.abclonal.com.cn

Interleukin-6 (IL-6) is a multifunctional α -helical cytokine that regulates cell growth and differentiation of various tissues, which is known particularly for its role in the immune response and acute phase reactions. The encoded protein has been shown to be an endogenous pyrogen capable of inducing fever in people with autoimmune diseases or infections. The protein is primarily produced at sites of acute and chronic inflammation, where it is secreted into the serum and induces a transcriptional inflammatory response through interleukin 6 receptor, alpha. The functioning of this protein is implicated in a wide variety of inflammation-associated disease states, including susceptibility to diabetes mellitus and systemic juvenile rheumatoid arthritis.

Recombinant Human IL-6 Protein is produced by HEK293 expression system. The target protein is expressed with sequence (Val30-Met212) of human IL6 (Accession #NP_000591.1) fused with a 6×His tag at the C-terminus.

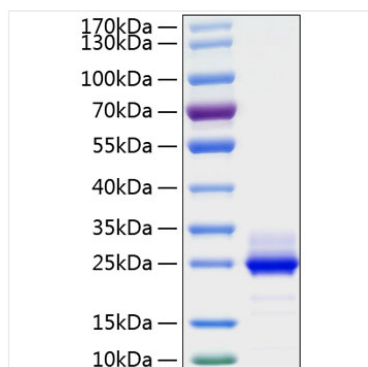
1. Measured by its binding ability in a functional ELISA. Immobilized Human IL6R at 1 µg/mL (100 µL/well) can bind Human IL-6 with a linear range of 2-15 ng/mL. 2. Measured in a cell proliferation assay using TF-1 Human erythroleukemic cells. The ED₅₀ for this effect is 0.10-0.40 ng/mL. The specific activity of Recombinant Human IL-6 is >1.2 × 10⁸ IU/mg, which is calibrated against the human IL-6 WHO International Standard (NIBSC code: 21/308).

The product is shipped at ambient temperature. Upon receipt, store it immediately at the temperature recommended below.

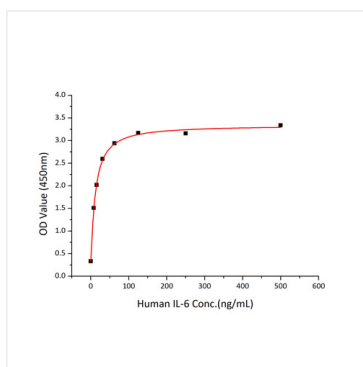
Store at -20°C. Store the lyophilized protein at -20°C to -80 °C up to 1 year from the date of receipt.
After reconstitution, the protein solution is stable at -20°C for 3 months, at 2-8°C for up to 1 week.
Avoid repeated freeze/thaw cycles.

For your safety and health, please wear a lab coat and disposable gloves for handling.

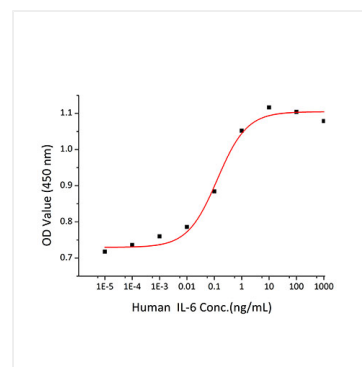
Validation Data



Recombinant Human IL-6 Protein was determined by SDS-PAGE under reducing conditions with Coomassie Blue.



Immobilized Human IL6R at 1 µg/mL (100 µL/well) can bind Human IL-6 with a linear range of 2-15 ng/mL.



Measured in a cell proliferation assay using TF-1 Human erythroleukemic cells. The ED_{50} for this effect is 0.10-0.40 ng/mL. The specific activity of Recombinant Human IL-6 is $>1.2 \times 10^6$ IU/mg, which is calibrated against the human IL-6 WHO International Standard (NIBSC code: 21/308).