

Recombinant Human Siglec-3/CD33 Protein

Catalog No.: RP00159 **Recombinant**

Sequence Information

Species	Gene ID	Swiss Prot
Human	945	P20138

Tags

C-hFc&His

Synonyms

CD33; SIGLEC-3; SIGLEC3; p67; CD33 molecule; SIGLEC-3; SIGLEC3; p67

Product Information

Source	Purification
HEK293 cells	> 97% by SDS-PAGE.

Endotoxin

< 0.1 EU/μg of the protein by LAL method.

Formulation

Lyophilized from a 0.22 μm filtered solution of PBS, pH 7.4. Contact us for customized product form or formulation.

Reconstitution

Centrifuge the vial before opening. Reconstitute to a concentration of 0.1-0.5 mg/mL in sterile distilled water. Avoid vortex or vigorously pipetting the protein. For long term storage, it is recommended to add a carrier protein or stabilizer (e.g. 0.1% BSA, 5% HSA, 10% FBS or 5% Trehalose), and aliquot the reconstituted protein solution to minimize freeze-thaw cycles.

Background

Myeloid cell surface antigen CD33 also known as Sialic acid binding Ig-like lectin 3, CD33 antigen or Siglec-3, is a member of the immunoglobulin superfamily and SIGLEC (sialic acid binding Ig-like lectin) family. This Single-pass type I membrane protein contains 1 Ig-like C2-type (immunoglobulin-like) domain and 1 Ig-like V-type (immunoglobulin-like) domain. CD33/Siglec-3 induces apoptosis in acute myeloid leukemia (in vitro). CD33/Siglec-3 can function as a sialic acid-dependent cell adhesion molecule and that binding can be modulated by endogenous sialoglycoconjugates when CD33 is expressed in a plasma membrane.

Basic Information

Description

Recombinant Human Siglec-3/CD33 Protein is produced by HEK293 expression system. The target protein is expressed with sequence (Asp18-His259) of human CD33/Siglec-3 (Accession #NP_001763.3) fused with an Fc, 6xHis tag at the C-terminus.

Bio-Activity

Measured by its binding ability in a functional ELISA. Immobilized Human CD33 Protein at 1 μg/mL (100 μL/well) can bind CD33 Rabbit pAb with a linear range of 0.03-1.66 ng/mL.

Storage

Store the lyophilized protein at -20°C to -80 °C for long term.

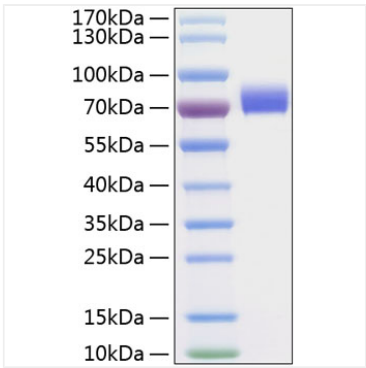
After reconstitution, the protein solution is stable at -20 °C for 3 months, at 2-8 °C for up to 1 week.

Avoid repeated freeze/thaw cycles.

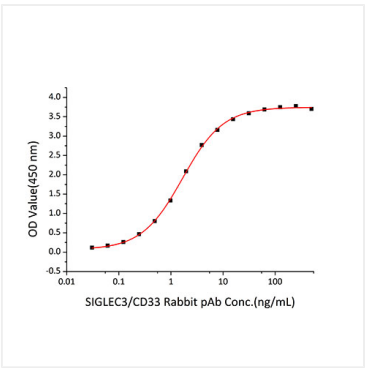
Contact

 | 400-999-6126 | cn.market@abclonal.com.cn | www.abclonal.com.cn

Validation Data



Recombinant Human CD33/Siglec-3 Protein was determined by SDS-PAGE with Coomassie Blue, showing a band at 65-75 kDa.



Immobilized Human CD33 Protein at 1µg/mL (100 µL/well) can bind CD33 Rabbit pAb with a linear range of 0.03-1.66 ng/mL.