

Recombinant Human Prolactin receptor/PRL-R Protein

Catalog No.: RP00128

Recombinant

Sequence Information

Species	Gene ID	Swiss Prot
Human	5618	P16471

Tags

C-His

Synonyms

HPRL; MFAB; hPRLr; PRLR; MFAB; hPRLr

Product Information

Source	Purification
HEK293 cells	≥ 95 % as determined by SDS-PAGE.

Calculated MW	Observed MW
25.26 kDa	35-40 kDa

Endotoxin

< 0.1 EU/μg of the protein by LAL method.

Formulation

Lyophilized from a 0.22 μm filtered solution of PBS, pH 7.4. Contact us for customized product form or formulation.

Reconstitution

Centrifuge the vial before opening. Reconstitute to a concentration of 0.1-0.5 mg/mL in sterile distilled water. Avoid vortex or vigorously pipetting the protein. For long term storage, it is recommended to add a carrier protein or stabilizer (e.g. 0.1% BSA, 5% HSA, 10% FBS or 5% Trehalose), and aliquot the reconstituted protein solution to minimize free-thaw cycles.

Contact

☎ | 400-999-6126

✉ | cn.market@abclonal.com.cn

🌐 | www.abclonal.com.cn

Background

The protein is a receptor for the anterior pituitary hormone, prolactin, and belongs to the type I cytokine receptor family. Prolactin-dependent signaling occurs as the result of ligand-induced dimerization of the prolactin receptor. Several alternatively spliced transcript variants encoding different membrane-bound and soluble isoforms have been described for this gene, which may function to modulate the endocrine and autocrine effects of prolactin in normal tissue and cancer.

Basic Information

Description

Recombinant Human Prolactin receptor/PRL-R Protein is produced by HEK293 expression system. The target protein is expressed with sequence (Gln25-Asp234) of human PRLR/Prolactin Receptor (Accession #NP_000940.1) fused with a 6×His tag at the C-terminus.

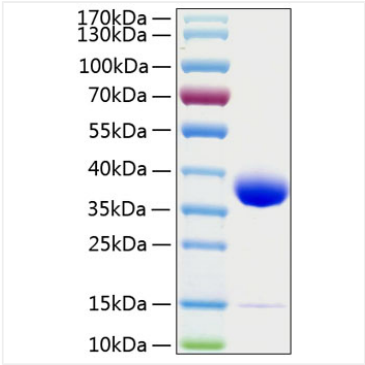
Bio-Activity

Measured by its binding ability in a functional ELISA. Immobilized Human PRLR/Prolactin Receptor at 1 μg/mL (100 μL/well) can bind Prolactin Receptor Rabbit mAb with a linear range of 0.67-3.45 ng/mL.

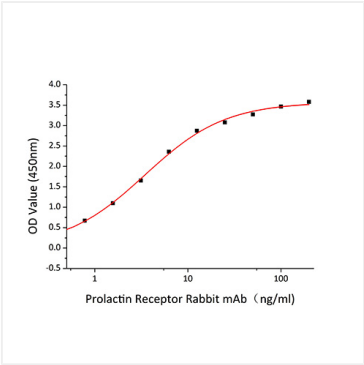
Storage

Store at -20°C. Store the lyophilized protein at -20°C to -80 °C up to 1 year from the date of receipt. After reconstitution, the protein solution is stable at -20°C for 3 months, at 2-8°C for up to 1 week. Avoid repeated freeze/thaw cycles.

Validation Data



Recombinant Human Prolactin receptor/PRL-R Protein was determined by SDS-PAGE under reducing conditions with Coomassie Blue.



Immobilized Human PRLR/Prolactin Receptor at 1µg/mL (100µL/well) can bind Prolactin Receptor Rabbit mAb with a linear range of 0.67-3.45 ng/mL.