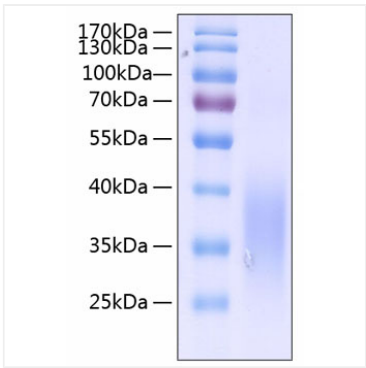


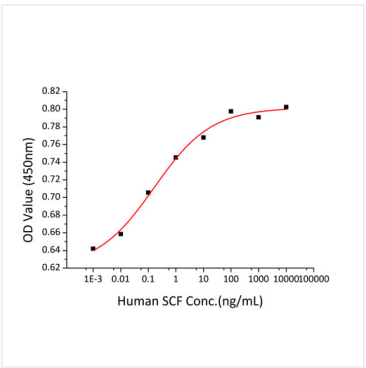
Catalog No.: RP00124 **Recombinant**

Avoid repeated freeze/thaw cycles.

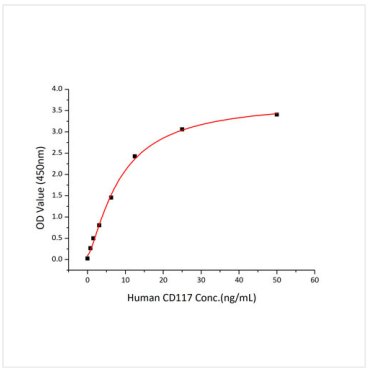
Validation Data



Recombinant Human c-Kit ligand/KITLG/SCF Protein was determined by SDS-PAGE under reducing conditions with Coomassie Blue.



Recombinant Human SCF promotes the proliferation of TF-1 human erythroleukemic cells. The ED₅₀ for this effect is 0.08-0.3ng/mL.



Immobilized recombinant human SCF at 1 µg/mL (100 µL/well) can bind recombinant human CD117 with a linear range of 1-6 ng/mL.