

**Catalog No.: RP00102** **Recombinant**

Species	Gene ID	Swiss Prot
Human	2674	P56159

## C-hFc&amp;His

GFRA1;GDNFR;GDNFRA;GFR-  
ALPHA-1;RET11;RET11;TRNR1

<b>Source</b>	<b>Purification</b>
HEK293 cells	≥ 85% as determined by SDS-PAGE.

## 72.54 kDa 100 kDa

< 1 EU/μg of the protein by LAL method.

Lyophilized from a 0.22  $\mu\text{m}$  filtered solution of PBS, pH 7.4. Contact us for customized product form or formulation.

Centrifuge the vial before opening. Reconstitute to a concentration of 0.1-0.5 mg/mL in sterile distilled water. Avoid vortex or vigorously pipetting the protein. For long term storage, it is recommended to add a carrier protein or stabilizer (e.g. 0.1% BSA, 5% HSA, 10% FBS or 5% Trehalose), and aliquot the reconstituted protein solution to minimize free-thaw cycles.

This protein is a member of the glial cell line-derived neurotrophic factor receptor (GDNFR) family of proteins. The encoded preproprotein is proteolytically processed to generate the mature receptor. Glial cell line-derived neurotrophic factor (GDNF) and neurturin (NTN) are two structurally related, potent neurotrophic factors that play key roles in the control of neuron survival and differentiation. This receptor is a glycosylphosphatidylinositol (GPI)-linked cell surface receptor for both GDNF and NTN, and mediates activation of the RET tyrosine kinase receptor. This gene is a candidate gene for Hirschsprung disease. Alternative splicing results in multiple transcript variants, at least one of which encodes a preproprotein that is proteolytically processed.

Recombinant Human GDNFR-alpha-1/GFRA1 Protein is produced by HEK293 expression system. The target protein is expressed with sequence (Ala19-Lys429) of human GFRA1/GFRA1/GDNFRA (Accession #NP\_665736) fused with an Fc, 6xHis tag at the C-terminus.

Store at -20°C. Store the lyophilized protein at -20°C to -80 °C up to 1 year from the date of receipt.

After reconstitution, the protein solution is stable at -20°C for 3 months, at 2-8°C for up to 1 week.

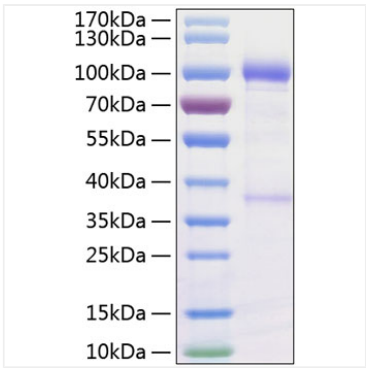
Avoid repeated freeze/thaw cycles.

 | 400-999-6126

✉ | [cn.market@abclonal.com.cn](mailto:cn.market@abclonal.com.cn)

 | [www.abclonal.com.cn](http://www.abclonal.com.cn)

Validation Data



Recombinant Human GDNFR-alpha-1/GFRA1 Protein was determined by SDS-PAGE under reducing conditions with Coomassie Blue.