

Recombinant Human IL-1 alpha Protein

Catalog No.: RP00098

Recombinant

Sequence Information

Species	Gene ID	Swiss Prot
Human	3552	P01583

Tags

C-His

Synonyms

IL1A;IL-1A;IL1;IL1-ALPHA;IL1F1

Product Information

Source	Purification
HEK293 cells	> 95% by SDS-PAGE.

Endotoxin

< 0.1 EU/μg of the protein by LAL method.

Formulation

Lyophilized from a 0.22 μm filtered solution of PBS, pH 7.4. Contact us for customized product form or formulation.

Reconstitution

Centrifuge the vial before opening. Reconstitute to a concentration of 0.1-0.5 mg/mL in sterile distilled water. Avoid vortex or vigorously pipetting the protein. For long term storage, it is recommended to add a carrier protein or stabilizer (e.g. 0.1% BSA, 5% HSA, 10% FBS or 5% Trehalose), and aliquot the reconstituted protein solution to minimize free-thaw cycles.

Background

The protein encoded by this gene is a member of the interleukin 1 cytokine family. This cytokine is a pleiotropic cytokine involved in various immune responses, inflammatory processes, and hematopoiesis. This cytokine is produced by monocytes and macrophages as a proprotein, which is proteolytically processed and released in response to cell injury, and thus induces apoptosis. This gene and eight other interleukin 1 family genes form a cytokine gene cluster on chromosome 2. It has been suggested that the polymorphism of these genes is associated with rheumatoid arthritis and Alzheimer's disease.

Basic Information

Description

Recombinant Human IL-1 alpha Protein is produced by HEK293 expression system. The target protein is expressed with sequence (Ser113-Ala271) of human IL-1 alpha/IL1A/IL1F1 (Accession #NP_000566.3) fused with a 6xHis tag at the C-terminus.

Bio-Activity

Measured by its binding ability in a functional ELISA. Immobilized Recombinant Human IL1A at 5 μg/mL (100 μL/well) can bind recombinant Human IL1R2, the ED₅₀ of Human IL1R2 is 2.18 μg/mL.

Storage

Store the lyophilized protein at -20°C to -80 °C for long term.

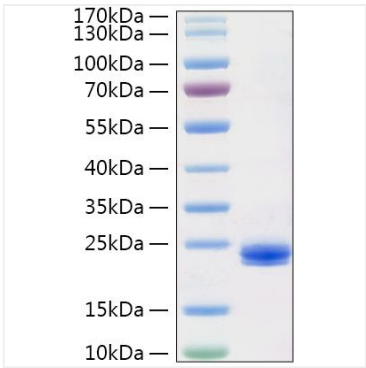
After reconstitution, the protein solution is stable at -20 °C for 3 months, at 2-8 °C for up to 1 week.

Avoid repeated freeze/thaw cycles.

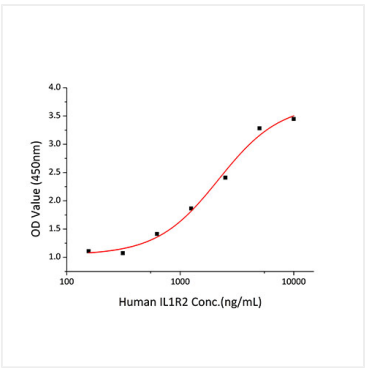
Contact

 | 400-999-6126 | cn.market@abclonal.com.cn | www.abclonal.com.cn

Validation Data



Recombinant Human IL-1 alpha Protein was determined by SDS-PAGE with Coomassie Blue, showing a band at 21 kDa.



Immobilized Recombinant Human IL1A at 5µg/mL (100µL/well) can bind recombinant Human IL1R2,the ED₅₀ of Human IL1R2 is 2.18µg/mL.