

Recombinant Human ErbB-3/HER3 Protein

Catalog No.: RP00083

Recombinant

Sequence Information

Species	Gene ID	Swiss Prot
Human	2065	P21860

Tags

C-His

Synonyms

ErbB-3; HER3; LCCS2; MDA-BF-1; c-erbB-3; c-erbB3; erbB3-S; p180-ErbB3; p45-sErbB3; p85-sErbB3; ERBB3; HER3; LCCS2; MDA-BF-1; c-erbB-3; c-erbB3; erbB3-S; p180-ErbB3; p45-sErbB3; p85-sErbB3; FERLK; VSCN1; ErbB-3

Product Information

Source	Purification
HEK293 cells	≥ 95 % as determined by SDS-PAGE.

Calculated MW	Observed MW
69.50 kDa	100-110 kDa

Endotoxin

< 0.1 EU/μg of the protein by LAL method.

Formulation

Lyophilized from a 0.22 μm filtered solution of PBS, pH 7.4. Contact us for customized product form or formulation.

Reconstitution

Centrifuge the vial before opening. Reconstitute to a concentration of 0.1-0.5 mg/mL in sterile distilled water. Avoid vortex or vigorously pipetting the protein. For long term storage, it is recommended to add a carrier protein or stabilizer (e.g. 0.1% BSA, 5% HSA, 10% FBS or 5% Trehalose), and aliquot the reconstituted protein solution to minimize freeze-thaw cycles.

Background

This protein is a member of the epidermal growth factor receptor (EGFR) family of receptor tyrosine kinases. This membrane-bound protein has a neuregulin binding domain but not an active kinase domain. It therefore can bind this ligand but not convey the signal into the cell through protein phosphorylation. However, it does form heterodimers with other EGF receptor family members which do have kinase activity. Heterodimerization leads to the activation of pathways which lead to cell proliferation or differentiation. Amplification of this gene and/or overexpression of its protein have been reported in numerous cancers, including prostate, bladder, and breast tumors. Alternate transcriptional splice variants encoding different isoforms have been characterized. One isoform lacks the intermembrane region and is secreted outside the cell. This form acts to modulate the activity of the membrane-bound form. Additional splice variants have also been reported, but they have not been thoroughly characterized.

Basic Information

Description

Recombinant Human ErbB-3/HER3 Protein is produced by HEK293 expression system. The target protein is expressed with sequence (Ser20-Thr643) of human ErbB3/Her3 (Accession #NP_001973.2) fused with a 6×His tag at the C-terminus.

Bio-Activity

Measured by its binding ability in a functional ELISA. Immobilized Recombinant Human ERBB3 at 2 μg/mL (100 μL/well) can bind Recombinant Human NRG1-beta1 with a linear range of 0.128-45.7 ng/mL.

Shipping

The product is shipped at ambient temperature. Upon receipt, store it immediately at the temperature recommended below.

Storage

Store at -20°C. Store the lyophilized protein at -20°C to -80 °C up to 1 year from the date of receipt. After reconstitution, the protein solution is stable at -20°C for 3 months, at 2-8°C for up to 1 week. Avoid repeated freeze/thaw cycles.

Operational Notes

For your safety and health, please wear a lab coat and disposable gloves for handling.

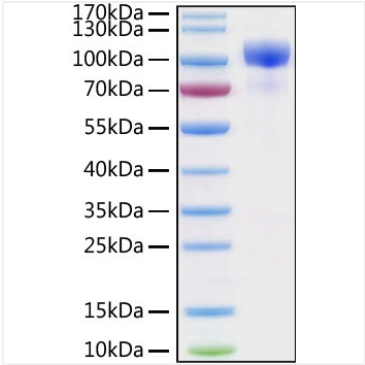
Contact

 | 400-999-6126

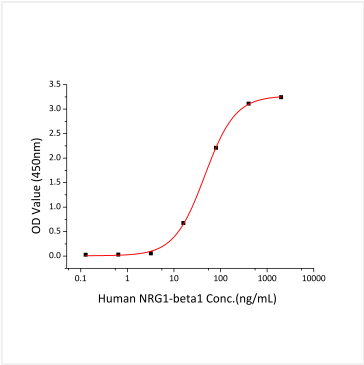
✉ | cn.market@abclonal.com.cn

🌐 | www.abclonal.com.cn

Validation Data



Recombinant Human ErbB-3/HER3 Protein was determined by SDS-PAGE under reducing conditions with Coomassie Blue.



Immobilized Recombinant Human ERBB3 at 2µg/mL (100µL/well) can bind Recombinant Human NRG1-beta1 with a linear range of 0.128-45.7 ng/mL.