

# Recombinant Human Ep-CAM/TROP-1/CD326 Protein

Catalog No.: RP00073 **Recombinant**

## Sequence Information

Species	Gene ID	Swiss Prot
Human	4072	P16422

### Tags

C-His

### Synonyms

DIAR5; EGP-2; EGP314; EGP40; ESA; HNPCC8; KS1/4; KSA; M4S1; MIC18; MK-1; TACSTD1; TROP1; EPCAM; DIAR5; epithelial cell adhesion molecule; EGP-2; EGP314; EGP40; ESA; HNPCC8; KS1/4; KSA; M4S1; MIC18; MK-1; TACSTD1; TROP1

## Product Information

Source	Purification
HEK293 cells	≥ 95 % as determined by SDS-PAGE.

Calculated MW	Observed MW
28.26 kDa	35-40 kDa

### Endotoxin

< 0.1 EU/μg of the protein by LAL method.

### Formulation

Lyophilized from a 0.22 μm filtered solution of PBS, pH 7.4. Contact us for customized product form or formulation.

### Reconstitution

Centrifuge the vial before opening. Reconstitute to a concentration of 0.1-0.5 mg/mL in sterile distilled water. Avoid vortex or vigorously pipetting the protein. For long term storage, it is recommended to add a carrier protein or stabilizer (e.g. 0.1% BSA, 5% HSA, 10% FBS or 5% Trehalose), and aliquot the reconstituted protein solution to minimize freeze-thaw cycles.

## Background

This protein is a carcinoma-associated antigen and is a member of a family that includes at least two type I membrane proteins. This antigen is expressed on most normal epithelial cells and gastrointestinal carcinomas and functions as a homotypic calcium-independent cell adhesion molecule. The antigen is being used as a target for immunotherapy treatment of human carcinomas.

## Basic Information

### Description

Recombinant Human Ep-CAM/TROP-1/CD326 Protein is produced by HEK293 cells expression system. The target protein is expressed with sequence (Gln24-Lys265) of human EpCAM/TROP-1 (Accession #NP\_002345.2) fused with a 6×His tag at the C-terminus.

### Bio-Activity

Measured by the ability of the immobilized protein to support the adhesion of NIH-3T3 mouse embryonic fibroblast cells. When cells are added to EpCAM-His coated plates (1.25 μg/mL, 100 μL/well), approximately >30% will adhere specifically after 30 minutes at 37°C.

### Storage

Store at -20°C. Store the lyophilized protein at -20°C to -80 °C up to 1 year from the date of receipt.

After reconstitution, the protein solution is stable at -20°C for 3 months, at 2-8°C for up to 1 week.

Avoid repeated freeze/thaw cycles.

## Contact

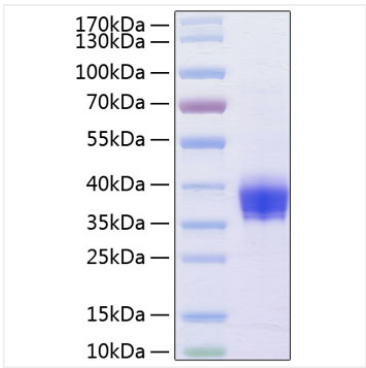
☎ | 400-999-6126

✉ | [cn.market@abclonal.com.cn](mailto:cn.market@abclonal.com.cn)

🌐 | [www.abclonal.com.cn](http://www.abclonal.com.cn)

## Validation Data

---



Recombinant Human Ep-CAM/TROP-1/CD326  
Protein was determined by SDS-PAGE under  
reducing conditions with Coomassie Blue.