

# Recombinant Human PD-1/PDCD1/CD279 Protein

Catalog No.: RP00067 **Recombinant**

## Sequence Information

| Species | Gene ID | Swiss Prot |
|---------|---------|------------|
| Human   | 5133    | Q15116     |

### Tags

C-His

### Synonyms

PDCD1; CD279; PD-1; PD1; SLEB2;  
hPD-1; hPD-I; hSLE1; programmed cell  
death  
1;PD-1;CD279;PD1;SLEB2;hPD-1;hPD-  
I;hSLE1;PD-1/CD279

## Product Information

| Source       | Purification           |
|--------------|------------------------|
| HEK293 cells | > 97% by SDS-<br>PAGE. |

### Endotoxin

< 0.1 EU/μg of the protein by LAL  
method.

### Formulation

Lyophilized from a 0.22 μm filtered  
solution of PBS, pH 7.4. Contact us for  
customized product form or formulation.

### Reconstitution

Centrifuge the vial before opening.  
Reconstitute to a concentration of  
0.1-0.5 mg/mL in sterile distilled water.  
Avoid vortex or vigorously pipetting the  
protein. For long term storage, it is  
recommended to add a carrier protein or  
stabilizer (e.g. 0.1% BSA, 5% HSA, 10%  
FBS or 5% Trehalose), and aliquot the  
reconstituted protein solution to  
minimize free-thaw cycles.

## Background

This protein is a cell surface membrane protein of the immunoglobulin superfamily. This protein is expressed in pro-B-cells and is thought to play a role in their differentiation. In mice, expression of this gene is induced in the thymus when anti-CD3 antibodies are injected and large numbers of thymocytes undergo apoptosis. Mice deficient for this gene bred on a BALB/c background developed dilated cardiomyopathy and died from congestive heart failure.

## Basic Information

### Description

Recombinant Human PD-1/PDCD1/CD279 Protein is produced by HEK293 cells expression system. The target protein is expressed with sequence (Leu25-Thr168) of human PD-1 (Accession #NP\_005009.2) fused with a 6×His tag at the C-terminus.

### Bio-Activity

Measured by its binding ability in a functional ELISA. Immobilized Recombinant Human PD-1 at 5 μg/mL (100 μL/well) can bind Recombinant Human PD-L1 with a linear range of 0.5-2 μg/mL.

### Storage

Store the lyophilized protein at -20°C to -80 °C for long term.  
After reconstitution, the protein solution is stable at -20 °C for 3 months, at 2-8 °C for up to 1 week.  
Avoid repeated freeze/thaw cycles.

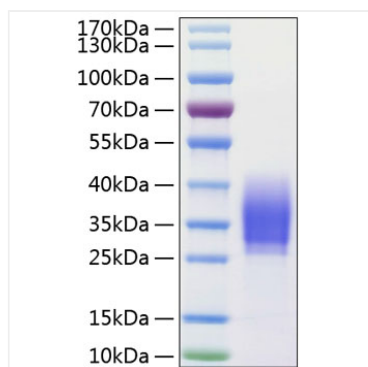
## Contact

☎ | 400-999-6126

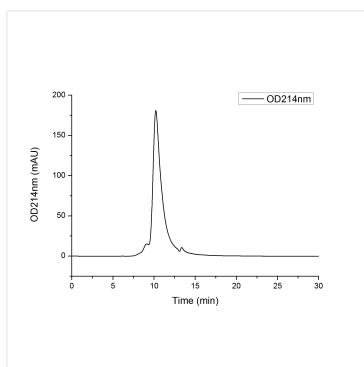
✉ | [cn.market@abclonal.com.cn](mailto:cn.market@abclonal.com.cn)

🌐 | [www.abclonal.com.cn](http://www.abclonal.com.cn)

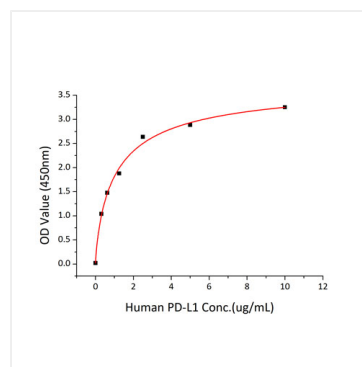
## Validation Data



Recombinant Human PD-1/PDCD1/CD279 Protein was determined by SDS-PAGE with Coomassie Blue, showing a band at 30-40 kDa.



The purity of Human PD-1 Protein (Cat.RP00067) was greater than 90% as determined by SEC-HPLC.



Immobilized Recombinant Human PD-1 at 5  $\mu\text{g/mL}$  (100 $\mu\text{L}$ /well) can bind Recombinant Human PD-L1 with a linear range of 0.5-2  $\mu\text{g/mL}$ .