

# Recombinant Human Sulfotransferase 1A1/SULT1A1 Protein

Catalog No.: RP00037 **Recombinant**

## Sequence Information

Species	Gene ID	Swiss Prot
Human	6817	P50225

### Tags

C-His

### Synonyms

SULT1A1;HAST1/HAST2;P-  
PST;PST;ST1A1;ST1A3;STP;STP1;TSPST1

## Product Information

Source	Purification
<i>E. coli</i>	≥ 95 % as determined by SDS-PAGE.

Calculated MW	Observed MW
35.01 kDa	32 kDa

### Endotoxin

< 0.01 EU/μg of the protein by LAL method

### Formulation

Lyophilized from a 0.22 μm filtered solution of 20mM Tris, 150mM NaCl, pH 8.0. Contact us for customized product form or formulation.

### Reconstitution

Centrifuge the vial before opening. Reconstitute to a concentration of 0.1-0.5 mg/mL in sterile distilled water. Avoid vortex or vigorously pipetting the protein. For long term storage, it is recommended to add a carrier protein or stabilizer (e.g. 0.1% BSA, 5% HSA, 10% FBS or 5% Trehalose), and aliquot the reconstituted protein solution to minimize free-thaw cycles.

## Contact

☎ | 400-999-6126

✉ | [cn.market@abclonal.com.cn](mailto:cn.market@abclonal.com.cn)

## Background

Sulfotransferase enzymes catalyze the sulfate conjugation of many hormones, neurotransmitters, drugs, and xenobiotic compounds. Particularly SULT1A1 (Sulfotransferase family, cytosolic, 1A, phenol-preferring, member 1), a member of the sulfotransferase 1 subfamily, which is a major pathway for drug metabolism in humans. Statistically significant associations were observed between the SULT1A1 genotype (Arg213His) and age, obesity and certain neoplasias (mammary, pulmonary, esophageal and urothelial cancer). Furthermore, the polymorphism of the SULT1A1 may be closely associated with breast cancer.

## Basic Information

### Description

Recombinant Human Sulfotransferase 1A1/SULT1A1 Protein is produced by *E. coli* expression system. The target protein is expressed with sequence (Met1-Leu295) of human SULT1A1 (Accession #NP\_001046.2) fused with a 6×His tag at the C-terminus.

### Bio-Activity

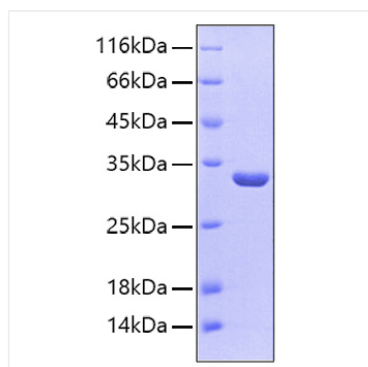
### Storage

Store at -20°C. Store the lyophilized protein at -20°C to -80 °C up to 1 year from the date of receipt. After reconstitution, the protein solution is stable at -20°C for 3 months, at 2-8°C for up to 1 week. Avoid repeated freeze/thaw cycles.



## Validation Data

---



Recombinant Human Sulfotransferase 1A1/SULT1A1 Protein was determined by SDS-PAGE under reducing conditions with Coomassie Blue.