

Recombinant Human IL-36 alpha/IL-1F6 Protein

Catalog No.: RP00027 **Recombinant**

Sequence Information

Species	Gene ID	Swiss Prot
Human	27179	Q9UHA7

Tags

C-His

Synonyms

IL36A;FIL1;FIL1(EPSILON);FIL1E;IL-1F6;IL1(EPSILON);IL1F6

Product Information

Source	Purification
<i>E. coli</i>	> 95% by SDS-PAGE.

Endotoxin

< 1.0 EU/μg of the protein by LAL method.

Formulation

Lyophilized from a 0.22 μm filtered solution of PBS, pH 7.4. Contact us for customized product form or formulation.

Reconstitution

Centrifuge the vial before opening. Reconstitute to a concentration of 0.1-0.5 mg/mL in sterile distilled water. Avoid vortex or vigorously pipetting the protein. For long term storage, it is recommended to add a carrier protein or stabilizer (e.g. 0.1% BSA, 5% HSA, 10% FBS or 5% Trehalose), and aliquot the reconstituted protein solution to minimize free-thaw cycles.

Background

Interleukin-1 family member 6 (IL-1F6), also known as interleukin 36, alpha (IL36A), is a pro-inflammatory cytokine which plays an important role in innate and adaptive immunity. IL-1F6 can activate NF-kappa-B and MAPK signaling pathways to generate an inflammatory response. The encoded protein functions primarily in skin and demonstrates increased expression in psoriasis. In addition, decreased expression of this protein has been linked to a poor prognosis in both hepatocellular carcinoma and colorectal cancer patients.

Basic Information

Description

Recombinant Human IL-36 alpha/IL-1F6 Protein is produced by *E. coli* expression system. The target protein is expressed with sequence (Met1-Phe158) of human IL-36 alpha (Accession #NP_055255.1) fused with a 6xHis tag at the C-terminus.

Bio-Activity

Storage

Store the lyophilized protein at -20°C to -80 °C for long term. After reconstitution, the protein solution is stable at -20 °C for 3 months, at 2-8 °C for up to 1 week. Avoid repeated freeze/thaw cycles.

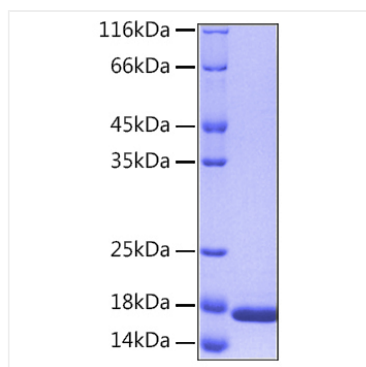
Contact

☎ | 400-999-6126

✉ | cn.market@abclonal.com.cn

🌐 | www.abclonal.com.cn

Validation Data



Recombinant Human IL-36 alpha/IL-1F6
Protein was determined by SDS-PAGE with
Coomassie Blue, showing a band at 17 kDa.