

Catalog No.: RP00020 **Recombinant**

Species	Gene ID	Swiss Prot
Human	27177	O9NZH7

Tags
C-His

FIL1;FIL1-(ETA);FIL1H;FIL1-(ETA);IL-1F8;IL-1H2;IL1-ETA;IL1F8;IL1H2;IL36B

Source	Purification
<i>E. coli</i>	≥ 90 % as determined by SDS-PAGE.

Calculated MW	Observed MW
18.07 kDa	18-20 kDa

< 0.1 EU/μg of the protein by LAL method.

Lyophilized from a 0.22 μm filtered solution of PBS, pH 7.4. Contact us for customized product form or formulation.

Centrifuge the vial before opening. Reconstitute to a concentration of 0.1-0.5 mg/mL in sterile distilled water. Avoid vortex or vigorously pipetting the protein. For long term storage, it is recommended to add a carrier protein or stabilizer (e.g. 0.1% BSA, 5% HSA, 10% FBS or 5% Trehalose), and aliquot the reconstituted protein solution to minimize free-thaw cycles.

 | 400-999-6126

✉ | cn.market@abclonal.com.cn

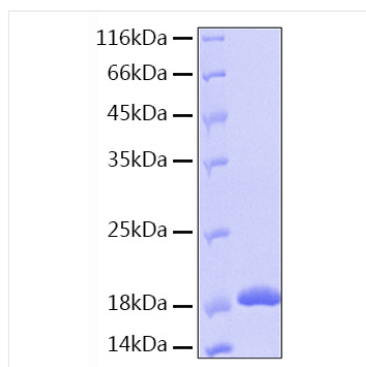
 | www.abclonal.com.cn

Interleukin-1 family member 8 (IL1F8) also known as IL36B, is a member of the interleukin 1 (IL-1) cytokine family. IL-36 beta is expressed by keratinocytes, naïve CD4+ T cells, neurons, and glia. It is up-regulated in keratinocytes and synovial fibroblasts by inflammatory stimulation and in psoriatic lesions. IL-36 beta promotes inflammatory responses by enhancing the activation and Th1 polarization of dendritic cells and T cells. It also enhances the production of multiple pro-inflammatory cytokines, chemokines, and anti-bacterial defensin peptides by keratinocytes, synovial fibroblasts, and articular chondrocytes. IL-1 family members exert their effects through binding to receptors that belong to the IL-1 receptor (IL-1R) family.

Recombinant Human IL-36 beta/IL-1F8 Protein is produced by *E. coli* expression system. The target protein is expressed with sequence (Arg5-Glu157) of human IL-36 beta (Accession #NP_775270.1) fused with a 6xHis tag at the C-terminus.

Store at -20°C. Store the lyophilized protein at -20°C to -80 °C up to 1 year from the date of receipt.
After reconstitution, the protein solution is stable at -20°C for 3 months, at 2-8°C for up to 1 week.
Avoid repeated freeze/thaw cycles.

Validation Data



Recombinant Human IL-36 beta/IL-1F8
Protein was determined by SDS-PAGE under reducing conditions with Coomassie Blue.