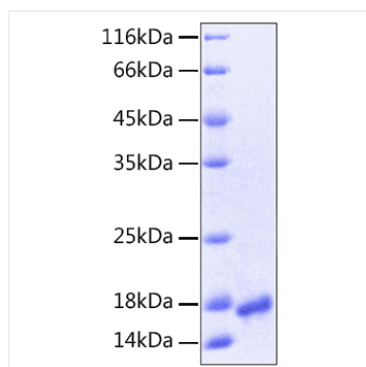
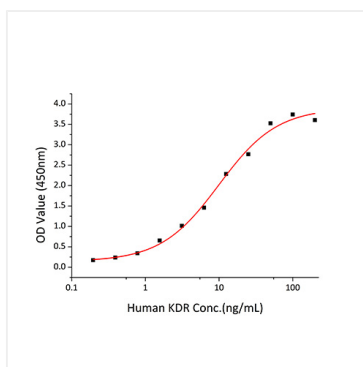




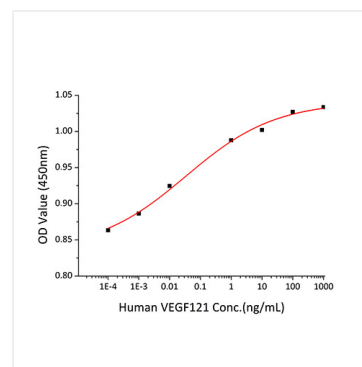
## Validation Data



Recombinant Human VEGF-A/VEGF121(K321N) Protein was determined by SDS-PAGE under reducing conditions with Coomassie Blue.



Immobilized Recombinant Human VEGF121 at 2 µg/mL (100 µL/well) can bind Human KDR with a linear range of 0.2-10 ng/mL.



Recombinant Human VEGFA stimulates cell proliferation of the human umbilical vein endothelial cells (HUVEC). The ED<sub>50</sub> for this effect is typically 0.017-0.068 ng/mL, corresponding to a specific activity of 1.47 × 10<sup>7</sup>-5.88 × 10<sup>7</sup> units/mg.