

# Recombinant Human PPlase A/PPIA Protein

Catalog No.: RP00016 **Recombinant**

## Sequence Information

|                |                |                   |
|----------------|----------------|-------------------|
| <b>Species</b> | <b>Gene ID</b> | <b>Swiss Prot</b> |
| Human          | 5478           | P62937            |

### Tags

No tag

### Synonyms

PPIA;CYPA;CYPH;HEL-S-69p

## Product Information

|                |                                   |
|----------------|-----------------------------------|
| <b>Source</b>  | <b>Purification</b>               |
| <i>E. coli</i> | ≥ 95 % as determined by SDS-PAGE. |

|                      |                      |
|----------------------|----------------------|
| <b>Calculated MW</b> | <b>Observed MW</b>   |
| 18.01 kDa            | Approximately 18 kDa |

### Endotoxin

&lt; 1 EU/μg of the protein by LAL method.

### Formulation

Lyophilized from a 0.22 μm filtered solution of 50mM Tris, 150mM NaCl, pH 8.0. Contact us for customized product form or formulation.

### Reconstitution

Centrifuge the vial before opening. Reconstitute to a concentration of 0.1-0.5 mg/mL in sterile distilled water. Avoid vortex or vigorously pipetting the protein. For long term storage, it is recommended to add a carrier protein or stabilizer (e.g. 0.1% BSA, 5% HSA, 10% FBS or 5% Trehalose), and aliquot the reconstituted protein solution to minimize free-thaw cycles.

## Contact

☎ | 400-999-6126

✉ | [cn.market@abclonal.com.cn](mailto:cn.market@abclonal.com.cn)

## Background

This protein is a member of the peptidyl-prolyl cis-trans isomerase (PPlase) family. PPlases catalyze the cis-trans isomerization of proline imidic peptide bonds in oligopeptides and accelerate the folding of proteins. The protein is a cyclosporin binding-protein and may play a role in cyclosporin A-mediated immunosuppression. The protein can also interact with several HIV proteins, including p55 gag, Vpr, and capsid protein, and has been shown to be necessary for the formation of infectious HIV virions.

## Basic Information

### Description

Recombinant Human PPlase A/PPIA Protein is produced by *E. coli* expression system. The target protein is expressed with sequence (Met1-Glu165) of human PPIA (Accession #NP\_066953.1).

### Bio-Activity

### Shipping

The product is shipped at ambient temperature. Upon receipt, store it immediately at the temperature recommended below.

### Storage

Store at -20°C. Store the lyophilized protein at -20°C to -80 °C up to 1 year from the date of receipt.

After reconstitution, the protein solution is stable at -20°C for 3 months, at 2-8°C for up to 1 week.

Avoid repeated freeze/thaw cycles.

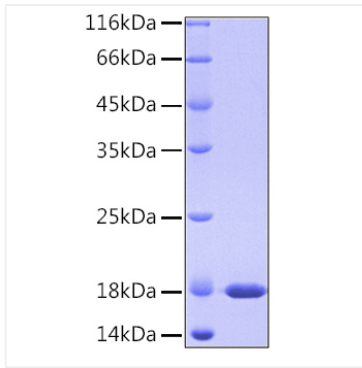
### Operational Notes

For your safety and health, please wear a lab coat and disposable gloves for handling.



## Validation Data

---



Recombinant Human PPIase A/PPIA Protein was determined by SDS-PAGE under reducing conditions with Coomassie Blue.