

# Rabbit anti-Human IL-15 mAb

**Catalog No.:** RMK0672

## Basic Information

**Catalog No.**

RMK0672

**Catagory**

Elisa Antibody Kit

**Application**

ELISA

## Product Information

**Ig Type**

Rabbit IgG

**Purification**

Affinity purification

**Endotoxin Level**

N/A

**Storage**


Store at -20°C.


**Avoid repeated freeze-thaw cycles.**

**Formulation**

Supplied as a 0.2 µm filtered solution in PBS with 0.05% Proclin 300, pH 7.3.

## Contact

 | [order@abclonal.com](mailto:order@abclonal.com)

 | [support@abclonal.com](mailto:support@abclonal.com)

 | [www.abclonal.com](http://www.abclonal.com)

## Background

The protein encoded by this gene is a cytokine that regulates T and natural killer cell activation and proliferation. This cytokine and interleukine 2 share many biological activities. They are found to bind common hematopoietin receptor subunits, and may compete for the same receptor, and thus negatively regulate each other's activity. The number of CD8+ memory cells is shown to be controlled by a balance between this cytokine and IL2. This cytokine induces the activation of JAK kinases, as well as the phosphorylation and activation of transcription activators STAT3, STAT5, and STAT6. Studies of the mouse counterpart suggested that this cytokine may increase the expression of apoptosis inhibitor BCL2L1/BCL-x(L), possibly through the transcription activation activity of STAT6, and thus prevent apoptosis. Alternatively spliced transcript variants of this gene have been reported.

## Immunogen Information

**Immunogen**

Recombinant Human IL-15 protein

## Cross-Reactivity

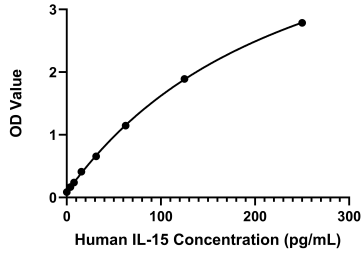
Human

## Assay Applications

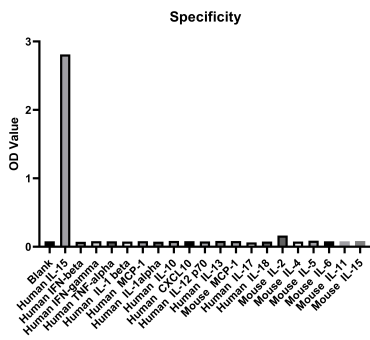
Human IL-15 Sandwich Immunoassay

		Recommended Concentration	Sample
ELISA	Capture	2-8 µg/mL	Rabbit anti-Human IL-15 mAb (Cat. No. RMK0671)
	Detection	0.0125-0.05 µg/mL	Rabbit anti-Human IL-15 mAb (Cat. No. RMK0672)
	Standard	3.91-250 pg/mL	Recombinant Human IL-15 Protein (Cat. No. RP01236)

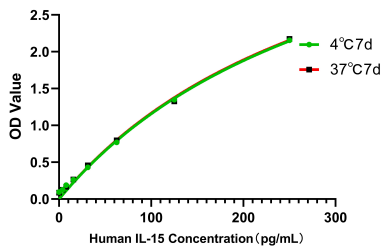
# Validation Data



This standard curve is only for demonstration purposes. A standard curve should be generated for each assay.



No significant cross-reactivity or interference was observed.



Placed at 37°C for 7 days, the stability of the standard curve all conform to CV <10%.